

# TE PAEPAE O AOTEA

*Kia eke atu ki Taupaenui o te tangata*

People reaching their full potential

## 2026 Prospectus







# Contents

From the Tumuaki	03
Ko wai au? Who are we?	04
Our Awa	05
Our School Values	06
Our Guiding Principles	07
Communication Between School and Home	08
Building Relationships	09
Junior Curriculum	10
Junior Timetables - Year 7-8/Year 9-10	11
Junior Key Contacts	12
Senior Key Contacts	13
Senior Curriculum	14
Senior Timetable Years 11-13	15
Senior Course Pathways	16
School Uniform	17
Leadership Opportunities	18
Activities at Te Paepae o Aotea	19
Facilities at Te Paepae o Aotea	20
School Campus Map	21
Bring Your Own Device (BYOD)	22
A Sense of Belonging and Feeling Valued	23





# From the Tumuaki

**I tipu ake au ki ngā rekereke o Pukekiwiriki  
me ngā tahataha o Manukau  
Nō Tāmaki Makaurau ahau  
Ko Williams tōku whānau  
Ko Rachel tōku ingoa**



Tēnā koutou e te whānau,

Te Paepae o Aotea opened in February 2023 with approximately 1000 students. We are a co-educational state school catering for students in Years 7–15. Te Paepae o Aotea was formed in response to the closure of Hāwera High School and Hāwera Intermediate at the end of the 2022 school year.

We are proud to be a school that prioritises strong relationships, high expectations, and a commitment to excellence. Our staff are dedicated to creating a learning environment where every student is known, valued, and supported to reach their full potential.

Our whakatauaikī, “Kia eke atu ki Taupaenui o te tangata,” challenges us to instil in our students the tools to help them achieve their full potential, in the pursuits they and their whānau deem important. It serves as a guiding light for our curriculum and culture, encouraging us to uphold a learning environment that is inclusive, aspirational, and deeply connected to our local identity.

At Te Paepae o Aotea, whānau and community engagement is not just encouraged—it is essential. We actively maintain connections through regular communication, whānau hui, and community events. Our school app, newsletters, and social media platforms help keep whānau informed and involved. We value the voices of our community and work in partnership to ensure our school reflects the needs and aspirations of those we serve.

Looking ahead, we are excited to begin the first phase of our school redevelopment project in the coming year. This phase will focus on the existing Te Ramanui Block, transforming it into a space that is dry, warm, modern, and fit for purpose. Our goal is to create learning environments that empower our students to thrive and reach their full potential in spaces that reflect the quality of education we strive to deliver.

**‘Kia eke atu ki Taupaenui o te tangata’  
People reaching their full potential**

Ngā mihi nui,

*Rachel Williams*  
**Tumuaki/Principal**





# Ko wai au?

## Who are we?

### TE PAEPAE O AOTEA

#### Understanding our name

Te Paepae o Aotea is a state co-educational school for Year 7-15 students based in Hāwera, South Taranaki.

Te Rūnanga o Ngāti Ruanui and Te Korowai o Ngāruahine have gifted the name of our school informed by the aspirations of our community. It is intended that the name will be clearly South Taranaki, be inclusive and relevant to the whole community and reflect our history and ambitions for the future.

There are two major components to the name. In summary:

**Paepae** refers to people who fill formal roles during pōwhiri including kaikaranga and kaikōrero. 'Paepae' represents the contest of ideas, enhancement of mana, the search for commonalities, the lifelong pursuit of improvement and excellence. 'Paepae' in this context is used as a metaphor for school, a place of learning. This connects with the 'Aotea' and journey narratives, but also to the terms 'pae tata' (near horizons or short-term goals) and 'pae tawhiti' (distant horizons or long-term goals).

**Aotea** While the name 'Aotea' refers to the origins of local iwi, it is an invitation to all students, staff, whānau and community to explore their own origins and history and thus their identity. It is anticipated that a secure local identity will provide a sound foundation for life's journey whether that unfolds locally, in other parts of Aotearoa, or beyond. It conveys courage, adventure, strength, persistence and the pursuit of knowledge.

#### Understanding our Whakatauākī

#### Kia eke atu ki Taupaenui o te tangata

##### People reaching their full potential

**Taupaenui** is drawn from the pure (purification karakia) 'Te Hā Oranganui' composed by Huirangi Waikerepuru in 1998. Te Hā Oranganui was first recited at the rising of the sun each day during a series of wānanga led by Huirangi in 1998 at Taiporohenui Marae. Simply expressed, Taupaenui refers to the attainment of human potential.

Our school will succeed if it instills in students the tools to help them achieve their potential in the pursuits they and their whānau deem important. The addition of 'o te tangata' is an explicit statement that this whakatauākī is for all members of the school community, not only students. Whānau, community and staff will not only support students to reach their potential, but challenge themselves to do the same.



#### DISCOVER OUR LOGO



##### PUANGA

The elliptical form that encompasses the whole design. This is representative of Punga and an understanding of Taranaki specific and Aotea knowledge. It is representative of the wrap around care students will receive at Te Paepae o Aotea.



##### TE ARA Ā TAWHAKI

Tawhaki features in Taranaki kōrero regarding the ascension to gather the three baskets of knowledge. The symmetry represents the cohesion of cultures working together. The concept of partnership, participation and protection of te Tiriti o Waitangi.



##### MANGOPARE

Mirrored to represent strength, kaha and mana of the school as a whole. Facing each other on the Paepae, this represents the two iwi affiliated with the ingoa.



##### AWA

The mangopare are a contemporary representation of Awa that flow around Taranaki, also depicting the Mangopare that journeyed along with Aotea waka.



##### MAUNGA TARANAKI

The single peak is the view of our maunga from Te Hāwera. This represents the strength to overcome challenges and new beginnings.

#### MAIN COLOURS



**ORANGE** is taken from the narrative of how Te Hāwera was named, reminiscent of burnt embers.

**NAVY BLUE** is associated with Awa, confidence, intelligence, stability and unity.

**BRIGHT BLUE** depicts the blue super giant Punga. It is attention grabbing, bright, adventurous and courageous.





# Our Awa

Te Paepae o Aotea students are placed in one of four house groups, named after four of the Awa (rivers) in South Taranaki that connect us with Maunga Taranaki, land and ocean.

Our four Awa compete against each other in our Inter-Awa Competition in all aspects of school life - sport, cultural, arts and academic events.

Each Awa has students from the junior and the senior school and a buddy system in place.

**Our four Awa are**

**Pātea**

**Tangahoe**

**Waingongoro**

**Kaūpokonui**

Students will explore the significance of their Awa during their time at Te Paepae o Aotea.







# TE PAEPAE O AOTEA

Kia eke atu ki Taupaenui o te tangata  
People reaching their full potential

The following values are the way we do things at Te Paepae o Aotea



## AOTEA

Our value of Aotea represents a caring environment for all students, staff, whānau and community, to explore identity.

- Kindness
- Caring for others
- Safe enviroment
- Inclusive



## TAUPAENUI

Our value of Taupaenui supports the attainment of human potential, the pursuit of knowledge and striving for excellence.

- Learning
- Achievement
- Aiming high
- Strive for excellence



## PAEPAE

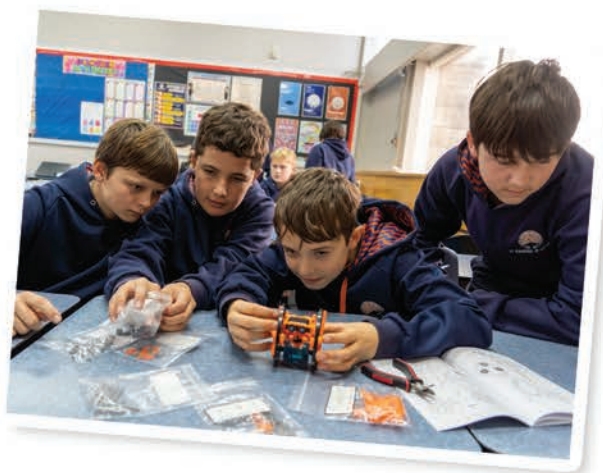
Our value of Paepae supports courage, adventure, strength, persistence and the pursuit of knowledge in the learning environment.

- Courage
- Try new things
- Strength
- Be an upstander





# Our Guiding Principles



## Culturally Inclusive

Knowing and respecting all students and their culture (beliefs and behaviours) is important to us. We use our name and our whakatauaāki to teach our local history. Local Tikanga and Te Reo are integrated across the curriculum.

## Personalised Learning Journey

Students at Te Paepae o Aotea have an Individual Learning Programme. Students plan, track and review their journal, alongside their teachers and whānau.

## Social, Physical and Emotional Curriculum

A family-like context underpins everything we do at Te Paepae o Aotea. Students are guided through a learning programme that supports their hauora/wellbeing. Students will become independent and resilient. Physical wellbeing through sport and regular activity promotes achievement. Restorative practices are used to build and maintain positive, respectful relationships across our school.

## Authentic Connections

Relationships are vital for both the academic achievement and the wellbeing of all our students. Teachers develop a deep understanding of students and their learning and this is documented in their ILP (Individual Learning Programmes).

## Future-focused Curriculum

Students become lifelong learners who demonstrate the following key competencies: thinking, relating to others, using language, symbols and texts, managing self and participating and contributing. Students plan their learning programmes and have choice. Students are encouraged to investigate areas of interest - this encourages innovation and growth mindsets.

## Expert Teaching

Students cover the full curriculum. Specialist teachers deliver the learning and access to labs/spaces are available. Research and professional development promote best practice teaching.

## Community Contribution

All students are expected to get involved in extracurricular activities within the school or in the community through sport, culture and/or the arts. In the Junior School, students will complete at least one community project each year. Students link their Community Contribution project to a minimum of three curriculum areas e.g, math, science, technology.

## Striving for Excellence

Excellence and personal achievements are celebrated and shared with the learning community.





# Communication Between School and Home

## Absences

Please use **School Apps NZ** or leave a message on the school phone.

## School Administration

Please contact the school office.

**Phone 06 223 2000**

(e.g: Sports fees, enrolments and general enquiries)

## School Website

[www.tepaepaeoaotea.school.nz](http://www.tepaepaeoaotea.school.nz)

This is where key information can be found about Te Paepae o Aotea.

## Parent Portal/Student Computer Logins

The login link for the Parent Portal can be found on our school website. All whānau are sent logins and passwords at the start of each year. The school office can assist you if needed. Students can use their computer login and passwords to access the student portal. This portal is useful to access the following information about students and we encourage caregivers and students to check this space often:

- Student details
- Attendance
- Assessment grades (including NCEA)
- Daily notices
- Financial summary
- Reports
- Timetable
- School calendar

## Emails

Important notices, reports and messages/communication from staff/school are usually emailed home. Please ensure your email details are correct and updated as needed.

## Live Reporting

### Senior and Junior School

Student assessments (with credits attached if applicable) are emailed home as they are entered into our school system. This provides our whānau with timely feedback.

## Newsletter

These are emailed directly home to caregivers. They will also be available on Facebook, School Apps and our website. Newsletters are emailed fortnightly on Fridays. Newsletters contain key messages that need to be shared with our community.

- Student success and accomplishments
- Sports information
- Upcoming school event details

A printed copy of the newsletter is available at the school office.



## Facebook/Instagram

**This is where we celebrate the success of our students and school.**

**Important messages will be posted here.**



## School Apps NZ

Download the **School Apps NZ** and find Te Paepae o Aotea, it will be used for the following purposes:

- School alert groups
- Direct absentee line
- Contact directory
- School event information
- Daily notices
- Permission Slips
- Classroom activities
- Sports draw and information

**Regular and effective connections between home and school provide the very best support for students. Together we will guide our students through their learning journey and help them strive to reach their full potential.**







# Building Relationships

**At Te Paepae o Aotea all students are valued and included**

**The pastoral and curriculum care of our students is extremely important to us.**

**Our Whare Pastoral Leaders lead our four Awa.** They are actively involved in the wellbeing and academic support of their students.

**Our Whānau Teachers know their students very well. The Whānau teacher is the first point of contact for students and whānau. Please email them or ring the school office.**

Whānau teachers work alongside students and whānau to develop, track and monitor their Individual Learning Programmes. They also track academic progress and attendance. Whānau classes are grouped in Year 7-8, Year 9-10 and Year 11-13.

- Our ENCO Leader (Educational Needs Co-Ordinator) works alongside children with additional learning needs and their whānau to achieve the best possible outcomes for these students.
- Our ORS Leader (Ongoing Resources Scheme) supports students verified as very high or high needs in our school. IEPs (Individual Educational Plans) are developed for ORS students and are regularly monitored and reviewed with whānau and staff.
- Learning Assistants provide further support for our students who need help in the classroom.
- Our Guidance Counsellor provides specialist counselling services and advice for academic or personal guidance.

## Student Academic Progress or Wellbeing

If you need to communicate with school to discuss your child's progress or wellbeing, please contact their Whānau teacher in the first point instance.

If additional assistance is required, contact your child's Whare Pastoral Leader of Learning or one of the Senior Leaders of Learning.

## Whānau Hui

Students begin their day in their Whānau class. This will become their base. During Whānau hui, students and teachers will say Karakia, mark attendance, read the notices and are lead through our school values and the Social and Emotional Curriculum. Awa Assemblies are held during Whānau Hui.

**Monday - KAUPAPA**

**Tuesday - PĀTEA**

**Wednesday - TANGAHOE**

**Thursday - WAINGONGORO**

**Friday - KAŪPOKONUI**

## Kaupapa

Whānau can choose to be a part of our Year 7-10 or Year 11-13 Kaupapa class. Students engage in the Pae. They have opportunities to lead various roles in karakia, waiata, mihi, moteatea and pepeha. They also explore the school uara to grow their hauora. Our kaupapa classes run during Whānau Hui.

Spaces are limited please register your interest:

**Dawn.Mendes@tepaepaeootea.school.nz**

## Tuakana Teina

Students from across the school connect to develop their Awa identity and culture and learn Te Paepae o Aotea values. Seniors students lead, mentor and support juniors to support their wellbeing, personal growth and engagement in whānau activities. Full school events including assemblies are held during this time.







# Junior Curriculum

## Foundation Skills - Literacy & Numeracy

Year 7-8 Whānau teachers teach structured Mathematics and Literacy. Year 9-10 classes are taught by teachers with literacy and numeracy expertise. Students work towards gaining their CAA assessments literacy and numeracy credits by the end of Year 10.

## Integrated Learning Modules

Integrated Modules cover at least two curriculum/subject areas. Curriculum/Subject areas include Science, Social Science/Aotearoa Histories, The Arts, Technology, Digital, Te Reo Māori, Health and Physical Education.

Over a two year programme (Semester based), students must cover all curriculum areas. Students are responsible for collecting evidence of learning using a digital portfolio.

## Taha Tinana

Year 7-8 students participate in physical activity every week. From these activities students trial and are placed in our junior representative teams that compete in inter-school fixtures during Term 2 and 3.

**Students must change into PE gear for Taha Tinana and PE Classes.**

## Community Contribution

Students complete a project that positively contributes to the community in some way. This could be within the school community or across the wider local community. This is a semester course.

## Flexi Time: Year 9-10 Students

Year 9-10 students have two blocks of Flexi Time each week for one term. This time focuses on one curriculum area intensely and also provides opportunity for extension and supported learning.





# Junior Timetables

## 2026 TE PAEPAE O AOTEA YEAR 7-8 TIMETABLE

TIME	MONDAY	TUESDAY	WEDNESDAY	THURSDAY	FRIDAY
9am-9.20am	Whānau Hui / SEL / Huakina Mai				
9.20am-11.15am	Foundations: Structured Mathematics and Structured Literacy				
11.15am-11.45am	INTERVAL				
11.45am-1.15pm	ILM 1	ILM 2	Community Contribution	ILM 2	ILM 1
1.15pm-1.45pm	LUNCH				
1.45pm-3pm	Community Contribution	Structured Literacy	Taha Tinana	Structured Literacy	Tuakana Teina

## 2026 TE PAEPAE O AOTEA YEAR 9-10 TIMETABLE

TIME	MONDAY	TUESDAY	WEDNESDAY	THURSDAY	FRIDAY
9am-9.30am	Whānau Hui / SEL / Huakina Mai				
9.30am-11.15am	Literacy	Numeracy	Literacy	Numeracy	Literacy
11.15am-11.45am	INTERVAL				
11.45am-1.15pm	ILM 1	ILM 2	Community Contribution	ILM 2	ILM 1
1.15pm-1.45pm	LUNCH				
1.45pm-3pm	Community Contribution	Flexi	Numeracy	Flexi	Tuakana Teina





# Junior Key Contacts

## Our Pastoral Team

- 1** First point of contact is your students Whānau teacher
- 2** **PĀTEA** Junior Whare Pastoral Leader  
Sandrine.Murphy@tepaepaeoaotea.school.nz
- TANGAHOE** Junior Whare Pastoral Leader  
Dawn.Mendes@tepaepaeoaotea.school.nz
- WAINGONGORO** Junior Whare Pastoral Leader  
Chelsea.Tippett@tepaepaeoaotea.school.nz
- KAŪPOKONUI** Junior Whare Pastoral Leader  
Janine.Horo@tepaepaeoaotea.school.nz
- 3** Senior Leader of Learning - Junior Pastoral  
Susan.Hopkins@tepaepaeoaotea.school.nz

## Our Curriculum Team

Please contact your Whare Curriculum Leader for any subject/timetable communication.

- PĀTEA** Whare Curriculum Leader  
Jason.Cressingham@tepaepaeoaotea.school.nz
- TANGAHOE** Whare Curriculum Leader  
Sam.Harris@tepaepaeoaotea.school.nz
- WAINGONGORO** Whare Curriculum Leader  
Erica.Stephens@tepaepaeoaotea.school.nz
- KAŪPOKONUI** Whare Curriculum Leader  
Kevin.Barnard@tepaepaeoaotea.school.nz
- Senior Leader of Learning - Junior Curriculum  
Kylie.Surgenor@tepaepaeoaotea.school.nz



## Whole School

- Careers Lead  
Kai.Elgar@tepaepaeoaotea.school.nz
- ESOL**  
Des.Bain@tepaepaeoaotea.school.nz
- ENCO**  
Liz.Stewart@tepaepaeoaotea.school.nz
- Itinerant Music**  
Shaun.Campbell@tepaepaeoaotea.school.nz
- Kaupapa Lead**  
Dawn.Mendes@tepaepaeoaotea.school.nz
- SCT**  
Kathryn.Scown@tepaepaeoaotea.school.nz
- ORS**  
Kathryn.Moss@tepaepaeoaotea.school.nz

## Our Pastoral Hub Staff

- Student Support Worker** - Mitch Careswell  
**Pastoral Support** - Trisha Careswell  
**Guidance Counsellor** - Benita Monteiro Eld





# Senior Key Contacts

## Our Senior Pastoral Team

- 1** First point of contact is your students Whānau teacher
- 2** **PĀTEA** Senior Whare Pastoral Leader  
Laurence.Earl@tepaepaeoaotea.school.nz  
**TANGAHOE** Senior Whare Pastoral Leader  
Gareth.Drysdale@tepaepaeoaotea.school.nz  
**WAINGONGORO** Senior Whare Pastoral Leader  
Chris.Robinson@tepaepaeoaotea.school.nz  
**KAŪPOKONUI** Senior Whare Pastoral Leader  
Emily.Davidson@tepaepaeoaotea.school.nz
- 3** Senior Leader of Learning - Senior Pastoral  
Mahaki.Akauola@tepaepaeoaotea.school.nz

## Senior Learning Designers

### English

Rose.Fischer@tepaepaeoaotea.school.nz

### Health & PE

Kelly.Stevens@tepaepaeoaotea.school.nz

### Learning Languages

Anaru.Haerewa@tepaepaeoaotea.school.nz

### Mathematics

Virendra.Kumar@tepaepaeoaotea.school.nz

### Science

Liz.Plodek@tepaepaeoaotea.school.nz

### Social Sciences

Kai.Elgar@tepaepaeoaotea.school.nz

### Technology

Helen.De'Ath@tepaepaeoaotea.school.nz

### The Arts

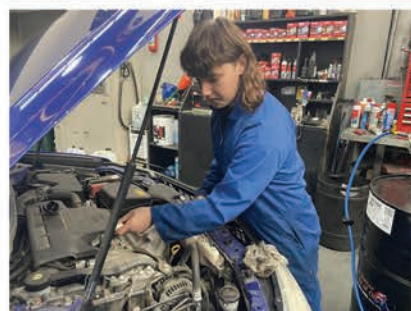
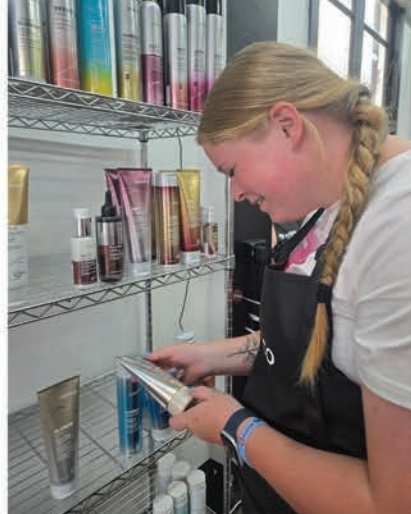
Emily.Davidson@tepaepaeoaotea.school.nz

### Transition Lead

Julie.Hill@tepaepaeoaotea.school.nz

### Senior Leader of Learning – Senior Curriculum

Pauline.Hurley@tepaepaeoaotea.school.nz







# Senior Curriculum

## In Partnership with whānau and students

Caregivers are encouraged to be a part of each student's learning journey through a partnership with the school. Caregivers are welcome to phone the school to make an appointment with a member of our guidance team, including Whare Pastoral Leaders, Whānau teachers, Careers Leader, Senior Leaders of Learning or Tumuaiki/Principal.

## Learning Programmes

Learning Programmes for senior students (Year 11-13) are run as a whole year course or divided into two semesters, similar to a university programme structure. Semester One begins in February and Semester Two in late June. Courses of study centre around topics of interest for our senior students. They encourage and allow exceptional learning and educational outcomes. All courses meet New Zealand curriculum requirements and offer relevant assessments to meet student academic and vocational needs. Students gain credits towards National Certificate of Educational Achievement (NCEA) Level 1, 2 and 3 and can work towards and achieve University Entrance by the end of Year 13. Vocational courses include trades courses (in conjunction with WITT), Hospitality, BCITO, PITO (Primary Industry Training Organisation) and Agriculture.

## Courses

Students select five courses, these may be a combination of full year and/or semester courses. Courses include either single subject content or integrate two or more subject areas.







## Course Endorsement

Course endorsement is achievable where there are at least 14 credits offered, regardless of which curriculum area the standards come from.

## NCEA - Literacy & Numeracy

Most Year 11 students will have begun their NCEA journey in 2025 with sitting the CAA's. In 2025 they will continue on their journey with a course that has been designed specifically for them.

Each subject course in Year 11 has four standards (two internal, two external). Students who have not gained their literacy and numeracy requirements will need to take Literacy and Numeracy courses within their choices.

## University Entrance

Year 13 students can work towards achieving University Entrance by studying courses that include 14 credits in three approved subject areas.

The Learning Programme/timetable for a senior student is planned at an Individual Learning Programme (ILP) meeting with the student, whānau and the Whānau teacher. This meeting ensures that students are able to attain their learning and vocational goals.

### 2026 TE PAEPAE O AOTEA SENIOR YEAR 11-13 TIMETABLE

TIME	Monday	Tuesday	Wednesday	Thursday	Friday
9am – 9:30am:	Whānau Hui	Whānau Hui	Whānau Hui	Whānau Hui	Whānau Hui
9.30am-11.15am	Option 2	Option 5	Option 5	Option 4	Option 1
11:15am – 11:45am	INTERVAL				
11.45am-1.15pm	Option 1	Option 2	Option 3	Option 3	Option 4
1:15pm – 1:45pm	LUNCH				
1.45pm-3.00pm	Option 4	Option 3	Option 1	Option 2	Tuakana Teina

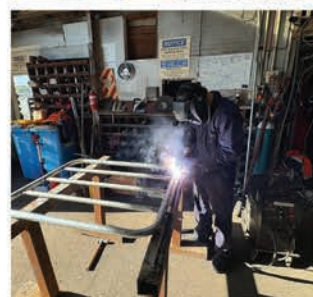




# Course Pathways

LEARNING AREA	LEVEL ONE	LEVEL TWO	LEVEL THREE
ENGLISH	English	English	English
	Internal English	Alternative English	
	Literacy*	Literacy (UE)*	Literacy (UE)*
	English for Employment*		
LANGUAGES/ESOL	Te Reo Māori	Te Reo Māori	Te Reo Māori
	Korean		
MATHEMATICS	Maths	Pure Maths	Calculus
			Statistics
	Numeracy*	Applied Maths	
	Financial Capabilities*	Composite Maths*	Mathematics*
PHYSICAL EDUCATION & HEALTH	Move It	Advanced PE	Advanced PE
		Sport Leadership*	Sport Leadership*
			Fitness Studies*
	Health	Health	Health
PRIMARY INDUSTRIES	The Great Outdoors*	The Great Outdoors*	The Great Outdoors*
	Primary Industries	Primary Industries	Primary Industries
	Agriculture/Horticulture	Agriculture	Agriculture
		Primary Industries Horticulture	Primary Industries Horticulture
SCIENCE	Integrated Science	Biology	Biology
		Chemistry	Chemistry
		Marine Studies	Marine Studies
		Physics	Physics
		Electronics*	
	Ag-Hort Science		Agriculture Science
SOCIAL SCIENCES	History	History	History
	Commerce	Accounting	Accounting
		Economics	Economics
	Geography	Geography	Geography
		Psychology	Psychology
		Classical Studies	Classical Studies
		Yes Programme	Yes Programme
TECHNOLOGY	Social Studies	Social Studies	Social Studies
	Textiles	Textiles	Textiles
	Construction Technology	Construction Technology	Construction Technology
	Engineering Trades	Engineering Trades	Engineering Trades
	Computer Science	Computer Science	Computer Science
THE ARTS	Digital Foundation*	Digital Foundation*	
	Visual Arts – Ko Wai Au	Artistic Horizons	Painting Odyssey
		Printmaking & Painting	
		Sculpture	Sculpture
	Experimental Photography	Snapshot Savvy: Exploring Photography	Lens Legends Mastering Photography
	Drama	Drama	Drama
CAREERS & PATHWAYS	Making Music	Making Music	Making Music
	Te Ao Haka	Te Ao Haka	Te Ao Haka
	Hospitality	Hospitality	Hospitality (3+2)
	Practical Life Skills*	Practical Life Skills	Practical Life Skills
		Gateways	Gateways
		Tourism	Tourism
		Community Nutrition	Nutritional Health & Well-being

\*Semester courses





# School Uniform

					
TPOA Skirt Navy	TPOA Culotte Navy	TPOA Girls Fitted Short Navy	TPOA Girls Fitted Trouser Navy	TPOA Boys Short Navy	TPOA Boys Trouser Navy
					
TPOA Polo Shirt	TPOA Vest	TPOA Hoodie	TPOA Soft Shell Jacket	TPOA Bucket Hat, Cap, Beanie	TPOA Scarf
					
Black or Navy Socks		Plain Black Shoes or Sandals			

## Uniform Requirements

- All students in 2026 must wear the correct uniform. 2023 TPOA polos/hoodies and jackets are acceptable.
- Students are to wear plain black or blue socks. **Socks cannot be worn with sandals.**
- Shoes must be all black for both closed in shoes and sandals. **No crocs, no slides/scuffs.**

## Senior Uniform Years 11-13 - Optional

					
TPOA SS Blouse Rust	TPOA LS Blouse Rust	TPOA SS Shirt Rust	TPOA LS Shirt Rust	TPOA Blazer	TPOA Tie

A full uniform fitting size is held at the Te Paepae o Aotea School Office.  
All uniforms are to be purchased online through:

[tepaepaeoaotea.nzuniforms.com](http://tepaepaeoaotea.nzuniforms.com)

WEARING IS BELIEVING  
**NZ UNIFORMS**







# Leadership Opportunities

Te Paepae o Aotea encourages student leadership. We are committed to being a student-led, student-centred school. Students are given leadership training opportunities and are encouraged to take on positions as role models for other students.

Head Students as well as Awa and Service Leaders contribute to the leadership of our school. There are opportunities for both senior and junior students to be leaders.

## Head Students

Four Head Students work together to lead our school. Each Head Student holds responsibility for one of the following aspects of school life:

- Academic
- Culture/Arts
- Community
- Sport

Head Students report to our Tumuaki and meet regularly.

## Awa Leaders

Each Awa is led by four Junior Awa Leaders and four Senior Awa Leaders. Awa Leaders lead and work with their Whare Pastoral Leaders to organise their students in the inter-house activities/competitions throughout the year. They are responsible for developing and driving the culture of their Awa. Senior and Junior Awa Leaders take on a responsibility in one aspect of school life; sport, arts/culture, academic or the community.

Awa Leaders support their Whare Pastoral Leaders to run their Awa assemblies and build their culture and identity. Awa Leaders work with their Head Student with the same area of responsibility.

## Service Leadership

Service Leadership roles include: Resource Hub, bus, lunchtime recreation equipment distribution, kai duties, school environment, plus any others needed.

Leaders of service areas work alongside staff in charge and the Community Head Student to ensure the smooth running of daily life at Te Paepae o Aotea.







# Activities

## At Te Paepae o Aotea

We provide many opportunities for students to participate in a wide range of activities. Students are expected to get involved in activities within the school and amongst the community through sport, culture and the arts. Students strive for individual excellence in one or more of these areas to develop personal growth and enhance wellbeing.

Our Sports Co-ordinator and Arts Co-ordinator organise and promote activities outside the classroom. Skilled staff and friends of the school assist students in sports, arts, cultural activities and teams.

Our inter-house sports competitions - school athletics day, swimming sports, cross country and lunchtime recreational activities (LRA) promote a sense of belonging and provide vital skills and team experiences.

Competitive and recreational teams in over 40 different sports cater for our students' needs and interests through a strong commitment to the Taranaki Secondary Schools Sports Association (TSSSA). We encourage students of all ages and abilities to get involved in sport to support their hauora/wellbeing.

At Te Paepae o Aotea there are many Arts and Cultural opportunities in the form of competitions and events within and outside of school.

### Arts/Cultural and Sports Examples:

- Concert band
- Junior and Senior Music Awards
- Kapa Haka and Māori Performing Arts, Pae Rangatahi/Manu Kōrero
- Itinerant music programmes offering a wide range of instruments
- School productions and Taranaki Smokefree Rockquest
- Art and photography exhibitions
- Debating and public speaking opportunities are available to all students within the school and beyond
- Year 7 & 8 Taranaki Intermediate Sports Exchanges
- Year 9-13 Sports Exchanges

### Whole School Events:

- Swimming
- Athletics
- Cross Country
- Inter Awa Waiata Competition
- Inter Awa Haka Competition

All students are expected to participate

Contact our School Arts and Sport Co-ordinators for more information.

**Michelle Shaw** - Arts Co-ordinator

[Michelle.Shaw@tepaepaeoaotea.school.nz](mailto:Michelle.Shaw@tepaepaeoaotea.school.nz)

**Vicki Roberts** - Sports Co-ordinator

[Vicki.Roberts@tepaepaeoaotea.school.nz](mailto:Vicki.Roberts@tepaepaeoaotea.school.nz)







# Facilities

## At Te Paepae o Aotea

Te Paepae o Aotea is situated on Camberwell Road and has two campuses for learning. The original Hāwera High School site is the base for the Junior School and the specialised learning spaces, Science labs, workshops, etc. Bayly Park (across the road) is the temporary home of our Senior Learning Village.

Our School is next to the TSB Hub – Taranaki's premier sports centre. We utilise this for whole school assemblies and important large events, as well as Physical Education, lunchtime recreational activities, team trainings and games at local, interprovincial and national level.

Our school maintains a well presented swimming pool. The pool is attached to the Jubilee Gym. This is a smaller gymnasium with a connected weights room.

We also enjoy the facilities at the Hāwera Aquatic Centre (across the fields) for our school swimming sports. The school canteen facility is located next to the school pool.

Te Paepae o Aotea Resource Hub (library) books, DVDs and other resources can be borrowed from the library and the upstairs study area provides a breakout space for self-directed learning for senior students.

Our nearby Food Technology suites allow our aspiring chefs to cater functions often held in the Resource Hub. Our Technology wing includes construction and engineering, photography, art, music, drama and textiles.

Te Paepae o Aotea is proud to be a registered Primary Industry Training Organisation (PITO). Students are able to practice their skills at our Hort Block which includes a large garden space, glass houses and a hydroponic greenhouse.

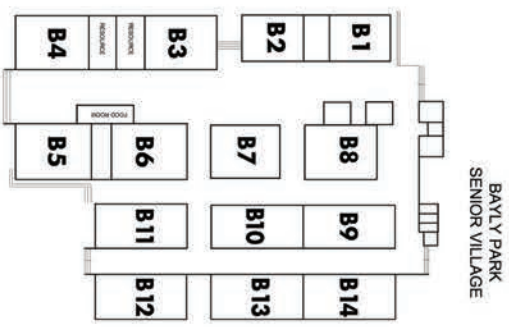






**TE PAEPAE O AOTEAA**  
Kia eke atu ki Taupaeuui o te tangata

## SITE MAP





# Bring Your Own Device (BYOD) at Te Paepae o Aotea

At Te Paepae o Aotea, we embrace digital learning as a vital part of our students' educational journey. All Year 9-13 pupils will be expected to bring a device to use in their classes.

We are committed to using a device as a tool to support the students' learning and allow students to work online from home should the situation arise.

Year 7 & 8 can bring their own learning device; however, there are devices available for use during classes.

## Why BYOD?

Our BYOD approach empowers students to:

- Access learning resources anytime, anywhere
- Develop digital literacy and responsibility
- Collaborate effectively with peers and teachers
- Personalize their learning experience

## Device Guidelines

We recommend devices that meet the following minimum specifications:

- Battery life: 6+ hours
- Screen size: 11 inches or larger
- Memory: 4GB RAM minimum
- Storage: 64GB or more
- Wi-Fi capable and able to run web-based applications (e.g., Google Workspace)

## Support and Safety

- All students must sign and follow our Cybersafety Agreement.
- Devices are the responsibility of the student and whānau.
- Our school provides filtered internet access and digital citizenship education.

## Need Help Choosing a Device?

Visit the Ministry of Education's guide for families:

<https://www.education.govt.nz/parents-and-caregivers/schools-year-0-13/digital-technology/choosing-device-your-child>  
[www.noellemingbyod.co.nz](http://www.noellemingbyod.co.nz)

## WE ARE A CELL PHONE FREE SCHOOL



At Te Paepae o Aotea we follow the New Zealand Government expectations.

**During 9am-3pm, including interval and lunch cell phones cannot be seen, heard or used.**

This policy is in effect to ensure a focused and distraction-free environment. Students should leave their cell phones at home.

Te Paepae o Aotea students accept and sign the conditions of the school's Digital Citizenship Agreement upon enrolment. This agreement covers students using BYOD and can be viewed on the Te Paepae o Aotea website. Te Paepae o Aotea expects students to uphold the school values when using technology. If students do not uphold the school values then appropriate school procedures will be followed.







“A sense of belonging and feeling valued”



“Promoting and making time to support hauora for students to encourage success”



“Students feel safe to try, to extend themselves without criticism”



A SENSE OF BELONGING & FEELING VALUED





The enrolment form is on the school website  
[www.tepaepaeoaotea.school.nz](http://www.tepaepaeoaotea.school.nz)



# ENROL HERE



## TE PAEPAE O AOTEA

*Kia eke atu ki Taupaenui o te tangata*

Phone 06 223 2000 - 13 Camberwell Road

PO Box 135, Hāwera 4640, New Zealand

Email: [enquiries@tepaepaeoaotea.school.nz](mailto:enquiries@tepaepaeoaotea.school.nz)

[www.tepaepaeoaotea.school.nz](http://www.tepaepaeoaotea.school.nz)

