



TE PAEPAE O AOTEA

Kia eke atu ki Taupaenui o te tangata

Newsletter – Friday, 6 June 2025

Kia ora e te whānau

The highlight of the past fortnight has been our school production, Into the Woods. Our students were amazing on stage, and we were so proud to be able to share their talents with you all. Putting on such a professional production can only be done with the help of so many, staff, students and community members. We have so many stunning people in our community and we are very thankful that they take the time to support and guide our students.

Our CAA Numeracy and Literacy assessments were completed last week; we now wait for NZQA to process these assessments. We have been advised that the wait for these assessments will not be as long as previous years. It is likely that the reading assessment grades will be released early July, and the writing and numeracy will be released slightly later. Well done to all our students who were brave enough to sit these assessments. Our Year 9 students will have their opportunity in Term 3.

Board voting closes next week, we are very lucky as a community that we have had 11 parent representatives put themselves forward. Last night at the community centre we had an opportunity to hear from each of them. Voting closes on 13 June, don't forget to get your votes into the school office. We have also had eight students who have been nominated to be the student representatives, which is fantastic; encourage your child to vote if they are Year 9 or above. Unfortunately, the Year 7 and 8 students due to voting regulations set in the Education and Training Act 2020 are unable to vote.

Live Reporting is available via My Kamar tab on our school website. Student results from class tests, asTTle, PAT, milestones and NCEA assessments are all available for parents and students. Attendance, groups, awards, caregiver, medical and financial information is also available through this tab. If you need to be resent your password or need information changed then please connect with our school office.

Our students are working well in their classes and have displayed our schools' values of Aotea, Taupaenui and Paepae. Our value of Aotea represents a caring environment for all, Taupaenui supports the attainment of human potential and Paepae supports courage, adventure, strength, persistence and the pursuit of knowledge in the learning environment.

Next week we have our annual inter awa Waiata competition from 2pm in the HUB, you are all most welcome to join us.

Ngā mihi nui,
Rachel Williams
Tumuaki



Parent Portal **Understand your child's learning**



New webspace for parents and whānau available

You will have seen in the news recently that a new webspace is available that provides practical videos, activities and resources to support learning that is easy to understand – empowering whānau to take a more active role in their child's education.

The webspace includes 'parent-friendly' versions of both The New Zealand Curriculum and Te Marautanga of Aotearoa.

You can explore the new webspace and view the available resources here:

[Parent Portal – Ministry of Education](#)

UPCOMING *dates*




TERM 2 - 2025

JUN 6	YEAR 7-8 PTC CHALLENGE TSB Hub, New Plymouth
JUN 13	END OF SEMESTER 1 For Senior Year 11-13 Students
JUN 13	WAIATA COMPETITION TSB Hub, 2pm
JUN 13	BOARD ELECTION DAY Voting closed 4pm
JUN 14	TPOA SENIOR SCHOOL BALL 6.30pm-10pm at TSB Hub, Hāwera

For more upcoming dates check out our calendar on the school website
www.tepaepaeoatea.school.nz

Te Paepae o Aotea Parent Board of Trustees Elections

The Establishment Board of Trustees (EBoT) applied for an alternative constitution, but the Minister of Education has declined this application. While the EBoT does not agree with this decision and this is not the desired outcome, the EBoT is committed to moving the school forward. Therefore, the school will transition to an elected board, with the timing of the new board coinciding with Matariki. The EBoT has valued its nga iwi partnership through the establishment phase of the school, which has set the school on a positive pathway. The New Zealand School Board Association will run board sessions for the community prior to the elections for potential board members.

 TE PAEPAE O AOTEA <small>Ko eke atu ki Te paepae o te kōwhiri</small> Parent Board of Trustees Election Timeline	Event	Date
	Select Returning Officer by	Friday, 11 April 2025
	Close Main Roll	Friday, 18 April 2025
	Call for Nominations by	Sunday, 20 April 2025
	Close Supplementary Roll	Wednesday, 7 May 2025
	Nominations Close (at 12pm)	Friday, 9 May 2025
	Voting Papers Issued by	Friday, 16 May 2025
	Election Day	Friday, 13 June 2025
	Close Poll	4pm on Election Day
	Accept Postal Votes	Wednesday, 18 June 2025
	Count Votes	Thursday, 19 June 2025
	Board Takes Office	Friday, 20 June 2025
	First Meeting of New Board	Thursday, 26 June 2025

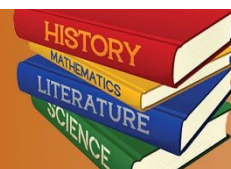
Click on the link below to view

[2025 Te Paepae o Aotea Board of Trustees Candidate Profiles](#)

[2025 Te Paepae o Aotea Student Board Candidates](#)



AFTER SCHOOL Senior Sessions Term 2



SUBJECT	Room	DAY
English	B11	L1 - 3: Tuesday L1 - 3: Thursday
Maths	B3 B3 B3	SHU & ADU: L1 - Maths: Wednesday VKU/SHU/ADU: L2- Maths: Tuesday VKU: L3: Stats & Calculus: Thursday
L1 Science		EPL – Tuesday and Thursday TWI - Wednesday
Biology	B10	EPL - Tuesday and Thursday TWI - Wednesday
Physics	B13	GBA - Thursday
Chemistry	B10	EPL - Tuesday and Thursday
Hard Materials	TN5	Tuesday
Digital	G1	Monday
Textiles	TR6	Monday
Art/Photography	TR 10	EDA - Tuesdays
Drama/Music	Music/ Drama space	KBA/SCA – Odd weeks (1,3,5,7,9)
Te Reo	B5	L1-3: Te reo Maori: Monday L1-3: Te Ao Haka: Thursday
PE/Health	B7	L2/3 PE - Thursday
Commerce/ Accounting/ Economics	B1	KEL - Tuesday
History/ YES	B2	CMO Tuesday / Wednesday
Geography	B1	Monday Odd weeks (1,3,5,7,9)
Psychology	B6	YCO - Thursday

School Policies

The school has a subscription with SchoolDocs to maintain, update and review our policies. SchoolDocs provide us with a comprehensive core set of policies that are well researched and follow the Ministry of Education National Administration Guidelines. The policies and procedures are tailored to our school and we supply specific information such as our charter together with procedures for behaviour management, reporting to parents, etc.

SchoolDocs update, modify or create policies in response to changes in legislation or Ministry guidelines, significant events, reviews/requests from schools and regular reviewing from the SchoolDocs team.

We invite you to visit the site at <https://tepaepaeoaotea.schooldocs.co.nz>

SchoolDocs login details

Username tepaepaeoaotea
Password excellence



Policies under review Term 2

- Planning and Preparing for Emergencies, Disasters and Crises
- Communication During an Emergency, Disaster or Crisis
- Emergency Closure
- Emergency Management
- Disaster Management
- Crisis Management

Please login to SchoolDocs to read and provide feedback on these policies.

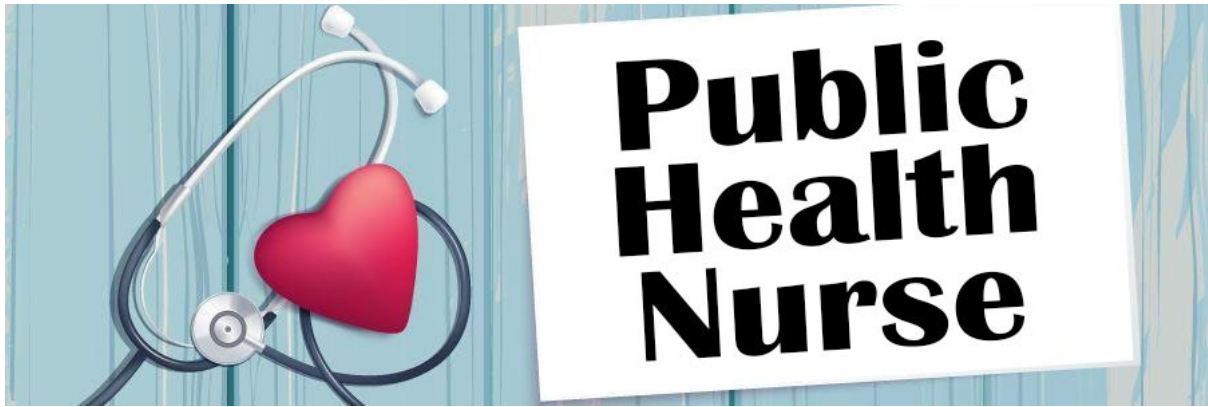


All school uniform items are purchased through



tepaepaeoaotea.nzuniforms.com

The school office has a full uniform set for sizing purposes



The Public Health Nurse will be at school two days every week for any health needs. Clinic is confidential and free.

Danielle Peach - Mobile [027 239 0679](tel:0272390679) Email Danielle.Peach@tdhb.org.nz

Mary Poulose - Mobile [027 517 3480](tel:0275173480) Email Mary.Poulose@tdhb.org.nz

- **Health and Hauora (wellbeing checks)**
- **General health concerns**
- **Contraception**
- **Condoms and pregnancy tests**
- **STI checks and the morning after pill**
- **Vision and hearing**

For students to book an appointment, please visit reception at the Pastoral Hub, or contact the Public Health Nurse:

Reminder for Students Taking Repeated Medication

Medicine plans must be arranged at the office for students taking repeated medication. Please see or contact Mel at the School Office 06 223 2000.

TE PAEPAE O AOTEA

Head Leader News

6 June 2025



ACADEMIC LEADER

Carlitos Morellon Anderson



Kia Ora

The weeks are flying by this term, and we've got some exciting opportunities coming up!

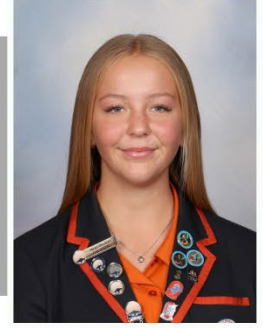
In Week 8, we'll be running a Mathletics competition, with students split into three groups: Year 7/8, Year 9/10, and Senior Students. More details will be shared next week, so keep an eye out and get ready to compete! Looking ahead to Tuesday, 25 June, all Year 12 and 13 students are invited to a special session during Block 3 in the library, where you'll have the chance to speak with former students from our school who are currently studying at University or UCOL. This is a great opportunity to ask questions and gain insights into life after high school.

For our juniors, we know many of our Year 7 and 8 students are preparing for the Otago Maths Challenge this year. To support you, we're planning to run a few study sessions. If you're interested, please reach out to me or one of the other academic leaders.

Ngā mihi, Carlitos Morellon Anderson

CULTURAL LEADER

Bethany Gyde



Kia Ora

Behind the scenes, the cultural team has been working hard on some exciting projects to celebrate and uplift the culture within our school. We have a few events we are working on and would love your input as to what we should do next so please get in touch with any of our cultural leaders to share your ideas. One of the biggest events coming up is the Waiata Competition — and we want you to get involved! This is more than just a singing challenge. It's a chance to celebrate te ao Māori, explore other languages, and show some serious school spirit. Whether you're a confident performer or just love a good tune, your voice matters. So, warm up those vocal cords, get your group together, and let's bring the energy! Let's make this year's comp one to remember.

Ngā mihi, Bethany Gyde

COMMUNITY LEADER

Julia Scott



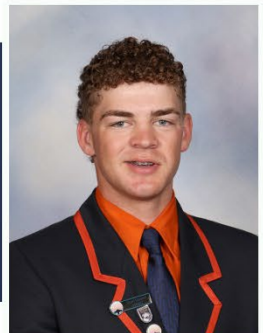
Kia Ora

We have seen the completion of Into the Woods JR with our senior students stepping up and performing fabulously. The community council continues to collect bottle caps and have had to move to another collection bin after the overwhelming amount of support we have had for this event. We thank every single one of our students and teachers for bringing in these bottle caps. Next week our seniors will have their annual ball, themed enchanted garden. Seniors are to purchase their ball tickets before the 9th of June. This coming week we also have a few of our students participating in the 40 hour challenge raising funds for children living in poverty in the Solomon Islands. There is still time to sign up for this event so please do not hesitate to reach out and ask for the details from myself or Mr Hopkins to sign up. As we enter winter I remind you all to take extra care of yourselves so you can avoid the colds going around.

Ngā mihi, Julia Scott

SPORTS LEADER

Baxter Hunt



Kia Ora

Coming up in the sporting space we have more LRA's coming out like another round of dodgeball. Also, we have a school exchange against Waiopahu College on the 18th of June at home so, if possible, come down and support our students as they compete in their sport. The year 7 and 8's have currently been training for their Rippa rugby tournament on the 10th of June, so this is another opportunity to come support. As you can tell the sports space is as busy as ever with regular winter sports on top of this, so I want to congratulate and thank all the coaches, managers and staff who are helping bring these teams and events together. And a huge thank you to the students who put time into their craft by showing up to training for themselves and their teams.

Ngā mihi, Baxter Hunt



INTO THE WOODS JR



By Lauren Kalin

Imagine a big melting pot of all the classic fairytales; Little Red Riding Hood, Jack and the Beanstalk, Cinderella; all intertwined in one big story. And that was Te Paepae o Aotearoa's Into The Woods JR.

Te Paepae o Aotearoa's Into the Woods JR brought all of your favourite fairytale characters to life in a dazzling stage musical, fit with hilarious antics and fun visual effects.

The energy and enthusiasm was evident throughout the whole show, as a member of the cast, I can confidently say that it was such a pleasure to be a part of. Nothing is more rewarding than hearing the audience laugh or clap, knowing that the audience enjoyed watching our performance as much as we enjoy putting it together. Playing Jack's Mother was a privilege, I found it somewhat difficult having to play such a grounded character in such a crazy tale, I had to keep Jack in check while dealing with all the crazy stuff happening around them like giant beanstalks and Princes running through the forest. Despite only being a minor character, I still felt like I was a valuable part of the show, because everyone was, every character interconnected and essential to the plot eventually tying all together.

Te Paepae o Aotearoa's Into the Woods JR was like stepping into a whole new world where every fairytale you knew got mixed up and turned upside down. The story jumped between characters you thought you knew, but with twists that kept things fresh and exciting. The stage came alive with clever effects; giant shadows looming, sudden bursts of colour, and quick scene changes that made it feel like magic was happening right in front of your eyes.

The mix of humour, suspense, and familiar stories made the show feel unpredictable and fun, keeping the audience hooked from start to finish. It wasn't just a mash-up of fairy tales; it was a full-on adventure that showed how these classic stories could connect in surprising ways.

Thank you to the following businesses for their support with this production.



**Bent Thomas
PANEL BEATING**



**WEIR BROS
NEW ZEALAND**

A special thanks to Yarrows The Bakers





TE PAEPAE O AOTEA
Kia eke atu ki Taupaenui o te tangata

Psychology Trip to Auckland

LEVEL 2-3

An early 5am start didn't dampen the students' excitement as we set off for Auckland. The bus ride went smoothly, and we arrived ready for a full day of learning. At the University of Auckland, we attended two insightful lectures.

Dr Tania Cargo spoke about child and adolescent mental health with a focus on culturally responsive parenting therapies.

Associate Professor Gwenda Willis then explored strengths-based approaches to addressing offending behaviour, drawing from her work in forensic psychology.

Afterwards, we walked to the AMRF Medical Sciences Learning Centre – Whakaaro Pai.

Students were fascinated by the preserved human organs and had the chance to try hands-on experiments, including activities that showed how the brain can be tricked by mixed body signals. It was a fantastic day with no hiccups and plenty of inspiration for future psychologists!

A special thank you to Andersons Pies and Fairview Hāwera for their support and contribution in helping make this trip a success.





GIRLS WITH HI-VIS[®] CONTRACT ENERGY VISIT

A wet Wednesday didn't stop these women learning new skills at Contract Energy in Stratford. Thanks to Connexis Infrastructure Training and Contract Energy, women from New Plymouth Scared Heart and Te Paepae o Aotea got the opportunity to visit on site at the power station, and had a hands on experience, and learnt about potential career opportunities within the power station.

TE PAEPAE O AOTEA
Kia eke atu ki Taupaenui o te tangata



TET TARANAKI ATHLETICS 2025 SPORTS AWARDS

Te Paepae o Aotea would like to acknowledge the following students and staff who were nominated at the TET Taranaki Athletics Sports Awards held in Inglewood on Thursday, 29 May 2025:

Bethany Gyde - Volunteer; Tayla Sturgeon - 12-14 Year old Girls; Daniel Mandengu, David Mandengu and Elliot Wills - Junior Boy and Jason Cressingham - Coach of the Year.

Te Paepae o Aotea congratulates the following who won their categories:

Tayla Sturgeon 12-14 Year Old Girls
Daniel Mandengu - Most Promising Junior Boy
Jason Cressingham - Coach of the Year

TE PAEPAE O AOTEA
Kia eke atu ki Taupaenui o te tangata



LIONS YOUNG SPEECHMAKERS COMPETITION

The Lions Young Speechmakers' Competition for our district was held at our school library on Sunday, 25 May 2025. Entrants had to deliver a prepared speech between 5-6 minutes long and then an impromptu speech in which they had only 1 minute to prepare. Two students from our kura participated in the competition; Carlitos Morellon Anderson in Year 13 and Tiana-Deziah Hill in Year 12. Both students were well-prepared and represented our school to a very high standard. Although they didn't place this year, we are extremely proud of their efforts.

TE PAEPAE O AOTEA
Kia eke atu ki Taupaenui o te tangata



WOMEN IN TRADES TARANAKI 2025

On Thursday, 22 May 2025, the Women in Trades event was held at TET Stadium in Inglewood. The event gave students a chance to explore hands-on careers in trades, construction, engineering, automotive, conservation, and more. It was a great day of learning, inspiration, and breaking down barriers for women in these industries.

TE PAEPAE O AOTEA
Kia eke atu ki Taupaenui o te tangata



LEVEL 1 ENGINEERING

Engineering Trades Level 1 is an introductory qualification for students interested in Mechanical Engineering. It incorporates basic skills and knowledge in workshop safety procedures and basic engineering workshop techniques.

TE PAEPAE O AOTEA
Kia eke atu ki Taupaenui o te tangata



FIREFIGHTER SKY TOWER CHALLENGE

On Saturday, 24 May 2025 Glenn Heather a former teacher at Te Paepae o Aotea took part in the Firefighter Sky Tower Challenge.

This massive annual fundraising event is the ultimate challenge for firefighters from all over Aotearoa to give it their all for Kiwis living with blood cancer by climbing Auckland's Sky Tower.

Glenn had to climb 51 flights of stairs, 1103 steps, and wearing 25kg of firefighting gear which he completed in 21 min 57 sec.

TE PAEPAE O AOTEA
Kia eke atu ki Taupaenui o te tangata



Sports News

It's been another action-packed few weeks in the world of sport at Te Paepae o Aotea — and we're loving the energy, commitment, and teamwork on display.

Why do we play Sports? Sport is more than just winning games — it's about teamwork, commitment, and giving your best. Whether you're on the field, court, or sideline, every training and game is a chance to grow, challenge yourself, and support your mates.

- Train with purpose
- Play as a team
- Give 100% effort
- Support each other with Positive Vibes Only

We can still play hard and be competitive — remember how we speak, act, coach, and support each other matters. Let's keep the sideline and on-field energy positive, respectful, and encouraging. That's how we get the best experience and the best results.

Highlands Exchange – Weather Wipeout

Unfortunately, our much-anticipated exchange with Highlands Intermediate had to be cancelled due to poor weather. A real shame, as past exchanges have been super close and exciting. We're already looking forward to next year's showdown!

Te Paepae o Aotea Premier Netball Giving Back

Our Premier Netball team has been out in the community, sharing their skills and passion with our younger netballers. Through fun drills and coaching sessions, they're helping grow the next generation of stars. Ka pai, team.

Rugby Under the Lights

Last week, our 1st XV and U15 Rugby teams took to the field under the lights — in classic Taranaki winter conditions: wind, rain, and cold! Despite the weather, both teams showed outstanding teamwork and came away with wins. Huge thanks to the students, whānau, and staff who braved the elements to support them.

TSSSA Badminton – Fun & Fast-Paced

30 students took part in the TSSSA Badminton event this week. There were plenty of laughs, great rallies, and awesome sportsmanship on display. It was fantastic to see so many students giving it a go.

PCT Challenge – Strength, Stamina & Teamwork

We've got 16 Year 7 & 8 students gearing up for the PCT Challenge — a course based on the police physical competency test. It's all about strength, stamina, and working as a team. Last year, we placed 2nd — let's see if we can hit the podium again this year.

Senior Exchange – Waiopahu College Incoming!

Our senior students are getting ready for their annual exchange with Waiopahu College. Sports include netball, basketball, volleyball, rugby, and football. It's an awesome opportunity for our students to shine in their chosen sports and represent our kura with pride.

Strapping Night – Coming Soon!

Keep an eye out for a **Basic Strapping Night**, run by **Hawera Physio's Liam Clancy**. Date and time to be confirmed. Cost involved and limited numbers – registration essential.

This is a great opportunity to learn how to strap common niggles like ankles, knees, and hands — super useful for players, coaches, and supporters. Flyer coming soon.

Honour Badges

Have you achieved something awesome in sport, culture, academics or the community? Make sure you let us know. Students who wish to be acknowledged in academic or sporting achievements are now required to fill out a form. Criteria are on our school website. Download a nomination form and return it to the main school office. Students must fill out these forms to receive an honour badge (if their achievement meets the criteria). All information received will also help with end of year supreme awards for Sport, Culture and Academic.

Printable Honour Badge form [Nomination Form](#)

Honour Badge Criteria <https://tepaepaeoaotea.school.nz/co-curricular/awa/senior-honour-badges/>

For all sports queries, please contact Vicki Roberts, Sports Coordinator, via email vicki.roberts@tepaepaeoaotea.school.nz

2025 Upcoming Sporting Events	
TSSSA Events	
Squash	Monday, 9 June
Junior 3v3 Basketball	Thursday, 12 June
Taonga Tākaro	Monday, 16 June
Senior 3x3 Basketball	Tuesday, 24 June
Year 7-8 Sports Events	
Rippa Rugby Year 7-8	Tuesday, 10 June
Senior Sports Exchange	
Waiopahu College Exchange	Wednesday, 18 June

TUAKANA TEINA



TERM 2 SCHEDULE

Annual Inter Awa Waiata Competition	6 June	Waiata practice In Awa groups
Annual Inter Awa Waiata Competition	13 June	Waiata Competition Held at the TSB Hub
Matariki	20 June	SCHOOL CLOSED
Last Day of Term 2	27 June	Whole School Assembly

Last Day to purchase the Senior Ball tickets
Monday, 9 June 2025 by 3pm due to catering purposes
Any concerns please contact Deidre Coogan.

Enchanted Garden
TE PAEPAE O AOTEA
Senior Ball
Saturday, 14 June 2025
Tickets \$50 on sale now at the School Office

TAUPAENUI BADGES



Are you ready to embark on an exciting journey of learning and exploration?

Te Paepae o Aotea Taupaenui Badges are our homework program for year 7 & 8 students.

What are Taupaenui Badges, you ask? Well, imagine a treasure trove of fascinating homework projects, each one a shiny badge waiting for you to earn. From the depths of history to the wonders of science, and everything in between, there's a badge for every curious mind.

Here's how it works:

Taupaenui Badges is completely optional, but oh-so-rewarding! You get to choose which badges you want to tackle, whether it's diving into the mysteries of space or uncovering the secrets of ancient civilizations. Each badge comes with a variety of tasks, each worth a different number of stars.

Your mission, should you choose to accept it, is to complete a total of 20 stars' worth of tasks to the best of your ability. Don't worry, you can complete them either digitally or with good ol' pen and paper – whatever suits your style!



Once you've conquered your chosen tasks, it's time to submit them to the one and only Mrs Surgenor for marking. If your work shines bright like a star in the night sky, you'll be rewarded with a certificate of achievement and, drumroll please, your very own Taupaenui badge!

Picture yourself proudly wearing that badge at the next Awa assembly, knowing that you've ventured into the realms of knowledge and emerged victorious.

**So, what are you waiting for? Let the quest for Taupaenui begin!
Dive in, explore, and let your curiosity guide you to greatness. The adventure awaits!**

Please click on the link below for ALL Badge information:

[AAA Year 7-8 Taupaenui badge information.pdf](#)



Every Bit of Support Makes a Difference

Kura Kai is a charitable organisation that provides chest freezers to High Schools around Aotearoa. At Kura Kai, they live by the value of manaakitanga (generosity and caring for others) and we are very fortunate at our school to have been included in this organisation.

Kura Kai have provided a freezer that we can stock, so our rangatahi and whānau can access support when they need it. Meals will be cooked by our students.

If you are in a position to offer support by way of donations, ingredients or meals we would love to hear from you.

Contact: Nic Edwards
nicolaschumacher@hotmail.co.nz | 027 275 4878

If you need a Kura Kai meal please contact Nic Edwards



www.kurakai.co.nz



Kura Kai NZ



@kurakai_nz

TE PAEPAE O AOTEA School Sponsorship



Te Paepae o Aotea wish to thank our amazing local businesses for their support with sports teams and school events.



Ben Thomas
PANEL BEATING



CORRIGAN
ELECTRICAL



WEIR BROS
NEW ZEALAND



**SILVER
FERN®
FARMS**

Mane Street Hair

TODD STOKES
EARTH MOVING & CARTAGE



FAIRVIEW HAWERA



If your business would like to sponsor a school sport or event please
contact Vicki.Roberts@tepaepaeoaotea.school.nz or
Claire.Kalin@tepaepaeoaotea.school.nz



Attendance Incentive

Up for grabs:

- 12 movie vouchers
- 2 \$50 Repco gift cards
- 5 \$20 lunch snack
- zip mixer \$495
- 6 \$30 Normanby butcher voucher
- 8 \$25 eltham cheese bar
- Noel Leeming wonderboom \$130
- 14 keti bags values \$150ea
- SPCA \$50 voucher

ATTENDANCE GIVEAWAY

One of our students, Hazel Reynolds, has been working hard to connect with local businesses to support an attendance initiative. Students who have 90% or higher school attendance will be eligible for the draw at the end of term assembly.



A school & community based project lead by Hazel Reynolds



Sponsors



A school & community based project lead by Hazel Reynolds