



# TE PAEPAE O AOTEA

*Kia eke atu ki Taupaenui o te tangata*  
People reaching their full potential



# Senior Course Booklet

## 2025

# Contents

• Introduction/NCEA Requirements	Pg 3
• Endorsements	Pg 4
• Vocational Pathways	Pg 5
• Pathways	Pg 7
• To Come Pauline	Pg 9
• Level 1 – Course Table	Pg 10
• Courses – Level 1	Pg 11
<i>Choose up to <b>eight</b> options from this section</i>	
• Level 2 – Course Table	Pg 20
• Courses – Level 2	Pg 21
<i>Choose up to <b>eight</b> options from this section</i>	
• Gateway NCEA Level 2	Pg 32
• Level 3 – Course Table	Pg 33
• Courses – Level 3	Pg 34
<i>Choose up to <b>eight</b> options from this section</i>	
• Gateway NCEA Level 3	Pg 43
• Te Paepae o Aotea Senior Leadership Team Contacts	Pg 44

**Our Senior School runs in two Semesters. Some courses will run over both semesters while other courses may only run for one semester.**

**You will work closely with your whānau teacher to map out your course and pathway to ensure that you are best prepared for life beyond Te Paepae o Aotea.**

**This year you will notice that some courses are cross curricular (standards that are assessed come from more than one subject area). You can still gain Merit and Excellence endorsement in the Level 1 and Level 2 courses.**

This pathway booklet is designed to give you and your parents information about courses that you can choose to study at Te Paepae o Aotea.

We provide opportunities for students to study at a level appropriate to their learning needs.

***Students select subjects for 2025 through the KAMAR/Student Portal.  
Please see the separate instruction sheet.***



# Subject Selections

## When selecting subjects, you need to think about:

### What subjects do I or would I enjoy?

Take time to read the subject descriptions.

### What subjects am I good at?

This may lead to gaining merit and excellence endorsement.

### Where does this subject lead to?

Is this subject a University Entrance subject or does it lead to a different pathway? i.e. Vocational Pathway

### What qualifications do I need for tertiary study and/or for the work that I hope to do when I leave school?

A good place to investigate what subjects would be useful for your desired pathway is Career Quest –

<https://www.careers.govt.nz/tools/careerquest/>

You may also like to speak with Mr Elgar, the Careers Advisor. It is especially important to check the careers that require you to take Mathematics and Science in the Senior School.



**Mr Elgar**

Careers Lead

[Kai.Elgar@tepaepaeoaotea.school.nz](mailto:Kai.Elgar@tepaepaeoaotea.school.nz)



**Sue Johnston**

Careers Assistant/  
Administrator

[Sue.Johnston@tepaepaeoaotea.school.nz](mailto:Sue.Johnston@tepaepaeoaotea.school.nz)

## NCEA Level Requirements

### LEVEL 1

60 credits are required at any level (Level 1, 2, 3) and 20 credits Level 1 literacy and numeracy (10 literacy and 10 numeracy credits).

### LEVEL 2

60 credits are required at Level 2 and above Level 1 literacy and numeracy requirements must also be met.

### LEVEL 3

60 credits are required at Level 3 and above Level 1 literacy and numeracy requirements must also be met.

Students are expected to complete a course in English and are strongly encouraged to take a course in Mathematics to ensure you gain the Literacy and Numeracy requirements.

Students who plan to study at university should carefully check the UE Literacy requirements.

Y12 students should aim to get the L2 credits needed for UE Literacy - 5 in Reading and 5 in Writing.



# Endorsements

## With Excellence & Merit

### Course

### Endorsement

Course endorsement provides recognition for a student who has performed exceptionally well in an individual course. Students will gain an endorsement for a course if, in a single school year, they achieve: 14 or more credits at Merit or Excellence, and at least 3 of these credits from externally assessed standards and 3 credits from internally assessed standards.

Note, this does not apply to Physical Education and Level 3 Visual Arts.

### Additional Qualifications

National Certificates such as the National Certificate in Tourism and the Certificate in Hospitality, lead students into the world of work or into courses which are run by Polytechnics or Private Training Providers.

When students perform consistently above the 'Achieved' level, their result(s) can be 'endorsed' to reflect that high achievement.

This can occur at either the certificate or individual course level.

## Certificate Endorsement

For an NCEA certificate to be endorsed with Excellence a student must gain **50 credits** at Excellence at the level of the certificate or above.

So, if a student has **50 Level 1 credits** at Excellence their Level 1 certificate will be endorsed with Excellence.

Likewise, if a student gains 50 credits at Merit (or Merit and Excellence) at Level 1 their NCEA Level 1 certificate will be endorsed with Merit.

Endorsement awards show on the Record of Achievement.



**TE PAEPAE O AOTEAROA**  
*Kia eke atu ki Taupaenui o te tangata*

**L3 ACADEMIC**

**L2 ACADEMIC**

**L1 ACADEMIC**

**L3 ACADEMIC**

**L2 ACADEMIC**

**L1 ACADEMIC**



# Vocational Pathways

The six Vocational Pathways improve the relevance of learning for students by indicating how their learning and achievement is valued by broad sectors of the workforce. Each has been colour-coded for ease of recognition to help students and teachers plan study programmes.

Government, industry, and educational representatives selected a range of Level 1 and 2 achievement and unit standards that they believed provide a curriculum foundation in each Vocational Pathway. These are known as recommended standards.

At Level 2, an additional category has been given to some of the recommended standards, known as Sector-Related standards.

These are standards that are closely related to the Vocational Pathway and require development of skills from, or direct experience in, an industry setting. The make-up of the pathways is important when young people are planning to achieve a Vocational Pathways Award.

If you are interested in these qualifications, you **MUST** talk to:



**Mrs Campbell**  
Senior Transition Lead

[Riejanne.Campbell@tepaepaeoaotea.school.nz](mailto:Riejanne.Campbell@tepaepaeoaotea.school.nz)



## What are the Vocational Pathways?

The Vocational Pathways provide new ways to achieve NCEA Levels 1, 2 and 3 and develop pathways that progress to further study, training, and employment.

The Vocational Pathways provide a framework for students to show how their learning and achievement is valued in the workplace by aligning learning to the skills needed for the industry.



**Social & Community Services**

Ratonga Pōpori,  
Ratonga Hāpori



**Construction & Infrastructure**

Te Mahi Hanga me te  
Pūtoi Hanganga



**Manufacturing & Technology**

Te Whakanao me te  
Hangarau



**Primary Industries (Food & Fibre)**

Ahumahi  
Matua



**Service Industries**

Ahumahi  
Ratonga



**Creative Industries**

Ahumahi  
Auaha





## Social & Community Services



### EXAMPLES OF JOBS RELATED TO THIS PATHWAY

Airforce, Animal Control, Army, Careers Advisor, Coast Guard, Counsellor, Doctor, Early Childhood Educator, Fire Fighter, Lifeguard, Navy, Nursing, Health Care Assistant, Paramedic, Physiotherapist, Police Officer, Prison Officer, Probation Officer, Psychologist, Social Worker, Teacher.



## Construction & Infrastructure



### EXAMPLES OF JOBS RELATED TO THIS PATHWAY

Architecture, Design, Building, Carpentry, Joinery, Earthworks, Excavation, Demolition, Electrical, Engineering, Gardening, Landscaping, Plumbing, Road Construction, Maintenance, Surveying.



## Manufacturing & Technology



### EXAMPLES OF JOBS RELATED TO THIS PATHWAY

Butcher, Baker, Computers, IT, Electronics, Programming, Electrical Equipment, Appliances, Components, Engineering, Design, Metal Works, Fabrication, Mining, Oil and Gas, Scientist, Textiles, Leather, Apparel, Transportation, Wood, Paper, Printing, Woodwork, Carpentry.



## Primary Industries (Food & Fibre)



### EXAMPLES OF JOBS RELATED TO THIS PATHWAY

Agriculture - Dairy, Meat, Wool, Aquaculture - Seafood, Fishing, Forestry, Heavy Vehicle Driver, Horticulture-Fruit, Vegetables, Landscaping, Machinery Operator, Services, Researcher, Scientist, Stockbuyer.



## Service Industries



### EXAMPLES OF JOBS RELATED TO THIS PATHWAY

Accounting, Banking, Finance, Airforce, Army, Beauty Therapy, Bus Driver, Coach Driver, Chef, Barista, Bartender, Front of House, Customer Services, Education, Health, Fitness, Lawyer, Legal Services, Media, Journalism, Navy, Personal Trainer, Pilot, Police Officer, Real Estate Agent, Retail, Sales Assistant, Sales, Marketing, Advertising, Security, Border Control, Travel Agent, Tour Guide, Flight Attendant, Vet.



## Creative Industries



### EXAMPLES OF JOBS RELATED TO THIS PATHWAY

Actor, Musician, Singer, Dancer, Architect, Interior Design, Art Gallery, Museum Curator, Artist, Sculptor, Director, Producer, Publisher, Event Management, Fashion Designer, Graphic Design, Animation, CGI, Librarian, Marketing, Advertising, Branding, Musical Production, Photography, Product Design, Props, Radio, Sound, Lighting, Stylist, Costume, Makeup, Writers, Composer, Editor.



# Pathways

## Gateway

Gateway- Te Tomokanga builds the links between school and business and allows schools to offer workplace learning opportunities for their students. The programme will develop students' vocational skills while still at school.

They will be able to get first-hand experience of what it is like in the workforce, and also to begin the qualifications needed in 'today's job market'.

Students involved in NCEA Levels 2 and 3, will have the opportunity to pursue these qualifications whilst beginning a trade/career specific qualification. They may be registered with the appropriate Industry Training Organisation (ITO) to begin their workplace training.

Students are encouraged to go out and find their own placement. All Gateway students complete three Health and Safety units before they begin their placement.

Students are in a training situation and are not paid while on Gateway placement. Students chosen for the programme need to be committed to it.

They will become full members of an organisation's workplace and will be treated much the same as any other employee and also follow the school rules as applicable to students outside the classroom. Students need to go through an interview process as there are only 100 placements available. There is no cost to students to be involved in this programme.



**Deidre Coogan**  
Gateway Coordinator

[Deidre.Coogan@tepaepaeoatea.school.nz](mailto:Deidre.Coogan@tepaepaeoatea.school.nz)



## STAR

The STAR programme offers students the chance to dive into courses that aren't typically available at school. You could learn to be a barista, develop leadership skills, work effectively in a team, ace interviews, or even try your hand at barbering and technology programmes. There are also courses for aspiring flight attendants, just to name a few.

These courses will be held at school, either during the term or over the holidays. The programme runs throughout the year and will be advertised on the school app, MyMahi, and Facebook, so you can easily sign up.

The courses on offer change each year, keeping things fresh and exciting.

STAR also supports students keen on tackling university papers or other programmes offered by tertiary providers.





# Year 11-13

TE PAEPAE O AOTEA - 2025 COURSE LINES															
	OPTION 1			OPTION 2			OPTION 3			OPTION 4			OPTION 5		
Level 1	FULL L1DRA L1ENG L1PIA L1INS L1MAT	1 L1FLI1 L1CSI1 L1PLS1	2 L1ALS2 L1CSE2 L1PLS2	FULL L1COM L1ENG L1KOR L1MOV L1HOS L1PHO L1VAA	1 L1AGSIL1 DFS1 L1NUM1	2 L1AGS2 L1EN2 L1NUM 2	Full L1MAT L1DAW L1ENI L1ENT L1HEA L1INS L1MMU L1TXT	1	2	Full L1CTN L1ENG L1HIS L1MAO L1MAT L1MOV	1	2	Full L1BND L1ESOL L1GEO L1TAH L1HOS	1 L1NMA1 L1LIT1 L1NUM1 L1TGO1	2 L1VAT2 L1LIT2 L1NUM2 L1TBL2
Level 2	L2ACC L2AMA L2APE L2CHE L2CHE L2DRA L2HOR L2PSY L2PLS			L2CTN L2ENG L2GTW L2HIS L2MAO L2PHO L2PHY L2TXT			L2ECO L2GEO L2GTW L2HEA L2HOS L2PMA L2TOU L2VAA			L2AGR L2AMA L2BIO L2CLS L2CSC L2ENG L2MMU L2SOS			L2BND L2CNU L2ENA L2ENT L2ESOL L2MNS L2TAH L2SPL L2ESOL L2YES	L2ELE1 L2MAT1 L2WDP1 L3UEL1	L2DFS2 L2VAT2 L2TGO2
Level 3	L3ACC L3CHE L3CTN L3DRA L3HOR L3PSY L3PLS			L3BIO L3CAL L3GTW L3HIS L3MAO L3PHO L3TXT			L3AGR L3ECO L3ENG L3PHY L3TOU L3VAA			L3APE L3CLS L3CSC L3GTW L3HEA L3HOS L3MMU L3HOS L3STA			L3ASC L3BND L3ESOL L3GEO L3HSW L3MNS L3TAH L3TOU L3YES	L3MAT1 L3TGO1 L3UEL1 L3SPL1	L3MAT2 L3VAT2 L3FTS2

## 2025 SUBJECT SELECTION PLANNER

	Line 1	Line 2	Line 3	Line 4	Line 5
Subject Selection					

This year subjects have been placed in lines and you select a subject from each option line (Lines 1-5). We are confident that each of these courses will run, however they will be dependent on the number of students who select the courses. In the event of a course not running, your Pastoral lead will work with you to select another subject. The planner will help you select your subjects. Select either one full year, or two semester courses for each line (if available).





# 2025 Level 1 Courses

LEARNING AREA	Course Name	Course Code	Course Length
ENGLISH	Semester English	L1EN2	Semester Two
	English	L1ENG	Full Year
	Internal English	L1ENI	Full Year
	Literacy	L1LIT	Semester One or Two
LANGUAGES/ESOL	Te Reo Māori	L1MAO	Full Year
	Korean	L1KOR	Full Year
MATHEMATICS	Maths	L1MAT	Full Year
	Numeracy	L1NUM	Semester One or Two
PHYSICAL EDUCATION & HEALTH	Move It	L1MOV	Full Year
	Health	L1HEA	Full Year
	The Great Outdoors	L1TGO	Semester One
PRIMARY INDUSTRIES	Primary Industries	L1PIA	Full Year
	Agriculture/Horticulture		
SCIENCE	Alternative Science	L1ALS	Semester Two
	Integrated Science	L1INS	Full Year
	Ag-Hort Science	L1AGS	Semester One or Two
SOCIAL SCIENCES	History	L1HIS	Full Year
	Commerce	L1COM	Full Year
	Financial Literacy	L1FLI	Semester One
	Geography	L1GEO	Full Year
TECHNOLOGY	Textiles	L1TXT	Full Year
	Technology construction	L1CTN	Full Year
	The Block	L1TBL	Semester Two
	Engineering Trades	L1ENT	Full Year
	Computer Science (Internal)	L1CSI	Semester One
	Computer Science (External)	L1CSE	Semester Two
	Digital Foundation	L1DFS	Semester One
THE ARTS	Visual Arts – External Ko Wai Au	L1VAT	Semester Two
	Visual Vibes of Aotearoa	L1VAA	Full Year
	Drama	L1DRA	Full Year
	Making Music	L1MMU	Full Year
	Te Paepae o Aotea Band	L1BND	Full Year
	Noho Marae	L1NMA	Semester One
	Experimental Photography	L1PHO	Full Year
	Dawn Raids	L1DAW	Full Year
Te Ao Haka	L1TAH	Full Year	
CAREERS & PATHWAYS	Hospitality 101	L1HOS	Full Year
	Practical Life Skills	L1PLS	Semester One & Two

*Where two semester courses are taken in the same curriculum area, they can be linked together for subject endorsement.*



## SEMESTER TWO

### Semester English L1EN2

TOTAL  
AS  
CREDITS  
10

This second semester course is all about language and how we use it in different contexts. Students will learn how to identify language features in a range of texts and how to explain their effects. These skills will help prepare them for NCEA Level 2 English.

**Curriculum area/s: English**  
**LIT: 10**

Vocational Pathway



## FULL YEAR

### English L1ENG

TOTAL  
AS  
CREDITS  
20

This course is for students who enjoy exploring language through a range of different mediums. It is also essential for those who wish to be prepared for subjects that offer UE literacy in Level 2 such as Level 2 English.

**Curriculum area/s: English**  
**LIT: 20**

Vocational Pathway



## FULL YEAR

### Internal English L1ENI

TOTAL  
CREDITS  
AS 10  
US 8

This course is designed for students who may need longer to explore ideas and gain success in English. This class will focus on gaining Level 1 Literacy through two Level 1 English Achievement Standards. We will also look at unit standards that support skills in communication. These assessments will also help support students to be successful with the Literacy co-requisite.

**Curriculum area/s: English**  
**LIT: 10**

Vocational Pathway



## SEMESTER ONE OR TWO

### Literacy L1LIT

TOTAL  
AS  
CREDITS  
10

This course caters for students who require Level 1 Literacy to gain their NCEA Level 1 Qualification. Students will work towards strengthening their reading and writing skills to prepare them for the Level 1 Literacy Co-requisite Unit Standards.

**Curriculum area/s: English**  
**LIT: 10**

Vocational Pathway



## FULL YEAR

### Te Reo Māori L1MAO

TOTAL  
**AS**  
CREDITS  
**20**

Immerse yourself in the rich cultural heritage of Aotearoa New Zealand by enrolling in our Te Reo Māori me ona tikanga programme. This comprehensive course is designed to introduce students to the Māori language, fostering a deep understanding of its significance, structure, and cultural context. This is an academic course that consist of practical learning styles from whaikorero, kemu maori , kapa haka and more.

**Curriculum area/s: Te Reo Māori**  
**LIT: 20**

Vocational Pathway



## FULL YEAR

### Korean L1KOR

TOTAL  
**AS**  
CREDITS  
**20**

Embark on an enriching journey with our Korean Language course. Develop comprehensive language skills through immersive speaking, reading, and writing activities. Explore the vibrant Korean culture, enhancing your cross-cultural communication abilities. Delve into media and entertainment while preparing strategically for NCEA assessment.

**Curriculum area/s: Languages**

Vocational Pathway



## FULL YEAR

### Maths L1MAT

TOTAL  
**AS**  
CREDITS  
**20**

The Level 1 Maths course is designed to prepare students for senior mathematics as well as explore mathematical problems that relate to life in Aotearoa New Zealand and the Pacific. Students intending to progress to NCEA Level 2 Mathematics courses must take this course. The content of this course places an emphasis on graphs and equations, number, linear algebra, bivariate data, right angled triangles and chance and data. Throughout both semesters there will be an opportunity of sitting 2 internal assessment standards and 2 external standards.

**Curriculum area/s: Mathematics & Statistics**  
**NUM: 20**

Vocational Pathway



## ONE SEMESTER

### Numeracy L1NUM

TOTAL  
**AS**  
CREDITS  
**10**

The focus of this Numeracy course is for students to gain a minimum of 10 Numeracy credits required for NCEA Level 1 and it will be offered in semester 2. The content of this course places an emphasis on number, statistics, and measurement. It is NOT suitable for students wishing to progress to either NCEA Level 2 Mathematics course in Year 12. This course is suitable for students who have not gained any numeracy credit during semester 1. This course also allows learners to prepare for CAA Course.

**Curriculum area/s: Mathematics & Statistics**  
**NUM: 10**

Vocational Pathway



## FULL YEAR

### Move It L1MOV

TOTAL  
**AS**  
CREDITS  
**20**

This course is for students who have a genuine interest in physical education, theory and practical. Students will investigate how Hauora is influenced through activity, develop movement skills, and demonstrate performance in physical activity. Develop key interpersonal skills required to become a good team member Kotahitanga (togetherness and unity) and understanding of biophysical and socio-cultural factors that influence movement.

**Curriculum area/s: Physical Education**

Vocational Pathway



## FULL YEAR

### Health L1HEA

TOTAL  
**AS**  
CREDITS  
**20**

This course is for students who have an interest in the health and wellbeing of themselves, whanau and wider community. Students will develop an understanding of current health related issues and learn how a range of issues influence Hauora. Students will develop strategies to strengthen their sense of identity, self-worth and foster healthy relationships.

**Curriculum area/s: Health**

Vocational Pathway



## SEMESTER ONE

### The Great Outdoors L1TGO

TOTAL  
**US**  
CREDITS  
**10**

Unit standards - L1TGO is a 1 Semester course that will give students a basic introduction to Aotearoa's Great Outdoors through a series of 1-day tramps in Te Papakura o Taranaki (Egmont National Park). During this course we will cover topics around preparation and safety in an outdoor environment. This course is made up of four internal assessments.

**Curriculum area/s: Physical Education**

Vocational Pathway



## FULL YEAR

### Primary Industries Agriculture/ Horticulture L1PIA

TOTAL  
**US**  
CREDITS  
**25**

This Primary Industry Academy course is designed specifically for secondary students as a pathway towards careers in the Primary Industries. This is the first year of a two-year L2 programme. Unit standards obtained during this course can be credited towards NCEA Level 1&2 and the Primary Industry L2 NZ Certificate in Primary Industry skills.

**Curriculum area/s: Agriculture,  
Horticulture & Science**

Vocational Pathway



## SEMESTER TWO

### Alternative Science L1ALS

TOTAL  
**AS**  
CREDITS  
**10**

This NCEA Level 1 Alternative Science course explores the dynamic interactions between the Earth, Sun, and Moon system, alongside the critical role of microorganisms in various environments. It is a stand-alone course, only offered in Semester 2.

**Curriculum area/s:** Science/Physics & Earth-Space Science, Chemistry-Biology

Vocational Pathway



## FULL YEAR

### Integrated Science L1INS

TOTAL  
**AS**  
CREDITS  
**21**

This Level 1 NCEA course explores key concepts in genetics, chemistry, and physics through hands-on investigations and real-world applications. This course provides a solid foundation for NCEA Level 2 Biology, Chemistry, and Physics.

**Curriculum area/s:** Science, Physics, Earth-Space Science & Chemistry-Biology  
**NUM: 5; LIT: 5**

Vocational Pathway



## SEMESTER ONE OR TWO

### Ag-Hort Science L1AGS

TOTAL  
**AS**  
CREDITS  
**16**

This NCEA Level 1 course explores the critical role of environmental management in primary production systems, focusing on sustainable practices and the impact of human activities. This course provides a solid foundation for NCEA Level 2 Agricultural Sciences.

**Curriculum area/s:** Science-Agricultural & Horticulture Science, Physics & Earth-Space Science  
**LIT: 6**

Vocational Pathway



## FULL YEAR

### History L1HIS

TOTAL  
**AS**  
CREDITS  
**20**

Unleash the Secrets of the Past! Welcome to Level 1 History, where Conflict and Power take centre stage! Get ready for an exhilarating journey as we delve into the captivating world of power dynamics and riveting conflicts that have shaped the course of history, both in Aotearoa New Zealand and across the globe!

**Curriculum area/s:** Social Science  
**LIT: 15 Credits**

Vocational Pathway



## FULL YEAR

### Commerce L1COM

TOTAL  
**AS**  
CREDITS  
**20**

An introduction to the business world, involving a mix of Accounting, Economics and Business Studies concepts and their application, from costing, budgets, financial statements, marketing financial decision making, innovation, economic interdependence and understanding different perspectives which creates a foundation for further specialisation in Years 12 and 13.

**Curriculum area/s: Social Science**  
**LIT: 10; NUM: 5**

Vocational Pathway



## SEMESTER ONE

### Financial Literacy L1FLI

TOTAL  
**US**  
CREDITS  
**12**

This course is a basic introduction to financial literacy, which is assessed through Unit Standards only, and is designed to help student become familiar with their personal finances.

**Curriculum area/s: Social Science**

Vocational Pathway



## FULL YEAR

### Geography L1GEO

TOTAL  
**AS**  
CREDITS  
**20**

Why does the land look the way it does? Why do people live where they do? This course provides introductory opportunities to: Understand how the processes that shape natural and cultural environments change over time how they vary in scale and from place to place and create spatial patterns. In addition, students will better understand how people's perceptions of and interactions with natural and cultural environments differ and have changed over time. This course is assessed by way of Achievement Standards.

**Curriculum area/s: Social Studies**  
**LIT: 15; NUM: 5**

Vocational Pathway



## FULL YEAR

### Textiles L1TXT

TOTAL  
CREDITS  
**AS 20**  
**US 3**

Students will have the opportunity to make at least two projects over the year, which include research and written work. Students will also be offered the chance to complete two externals which will both be based on the work they do in class.

**Curriculum area/s: Technology & Textiles**

Vocational Pathway



## FULL YEAR

### Technology Construction L1CTN

TOTAL  
US  
CREDITS  
27

The course covers a wide range of design and woodworking skills and knowledge that will be practiced and then applied to two projects. Students pick up technical, hands-on skills as well as planning, design, time management, problem solving, research, and evaluation skills. This course offers BCATS unit standards.

**Curriculum area/s: Technology & Hard Materials**

Vocational Pathway



## SEMESTER TWO

### The Block L1TBL

TOTAL  
US  
CREDITS  
10

This workshop-based course focuses on learning the knowledge of safe working practices as applied in elementary procedures and processes in constructing a project of the student's choice.

**Curriculum area/s: Technology & Hard Materials**

Vocational Pathway



## FULL YEAR

### Engineering Trades L1ENT

TOTAL  
US  
CREDITS  
26

Engineering Trades Level 1 is an introductory qualification for students interested in Mechanical Engineering. This qualification has a compulsory and an elective component. The compulsory section incorporates basic skills and knowledge in workshop safety procedures, basic engineering workshop techniques, use of basic tools and machinery and investigation, design and building of a simple product. The credits available in this course rely on students completing satisfactory projects, written work, and safe workshop practice throughout the year. Students will receive milestone information throughout the year to indicate their progress.

**Curriculum area/s: Technology & Hard Materials**

Vocational Pathway



## SEMESTER ONE

### Computer Science L1CSI (Internal)

TOTAL  
AS  
CREDITS  
10

Course Focus:

Introduction to foundational concepts in computer science. Exploration of how computers work, including hardware and software interactions. Study of basic algorithms and data structures, with a focus on understanding computational thinking.

Key Skills:

Understanding of computer architecture and operating systems. Familiarity with simple algorithms and their applications. Ability to apply computational thinking to solve basic problems.

**Curriculum area/s: Technology Digital**

Vocational Pathway



## SEMESTER TWO

### Computer Science L1CSE (External)

TOTAL  
AS  
CREDITS  
10

#### Course Focus:

Building on Semester One, this course dives deeper into advanced digital systems and technologies. Study of complex systems like cloud computing, virtualization, and advanced networking. Exploration of the ethical and societal implications of digital technology use.

#### Key Skills:

Advanced understanding of digital systems and how they integrate in modern technology.  
Ability to manage and troubleshoot complex networks and systems.  
Critical thinking about the impact of technology on society.

• Must have completed L1CSI.  
**Curriculum area/s: Technology - Digital**  
**Must have completed L1DIG (Internal)**

Vocational Pathway



## SEMESTER ONE

### Digital Foundation L1DFS

TOTAL  
US  
CREDITS  
20

#### Course Focus:

Introduction to basic coding concepts, with a focus on understanding programming logic and writing simple scripts. Exploration of essential office applications, including Excel for data management and Word for document creation. Practical tasks involving creating basic programs and using Excel for calculations and data organization

**Curriculum area/s: Technology - Digital**

Vocational Pathway



## SEMESTER TWO

### Visual Arts External - Ko Wai Au L1VAT

TOTAL  
AS  
CREDITS  
10

Discover and express your unique identity as an artist in this course. You'll document your progress in a workbook and produce artwork inspired by your personal interests and identity. Success in this course requires a strong work ethic and the ability to work independently on your projects. While prior art experience in 2024 is beneficial, it's not essential. NOTE: Can not be done in conjunction with other Art subjects as they use the same AS standards.

**Curriculum area/s: The Arts**

Vocational Pathway



## FULL YEAR

### Visual Vibes of Aotearoa L1VAA

TOTAL  
AS  
CREDITS  
20

Embark on an artistic journey with Visual Vibes of Aotearoa, where your unique self and heritage take centre stage. Kick off this adventure with a Noho marae experience, capturing your journey in stunning photographs, sketches, and diverse mixed media. Unleash your imagination, investigate and cultivate your original ideas, and express them through a spectrum of visual art practices, including photography, printmaking, and painting. NOTE: Can not be done in conjunction with other Art subjects as they use the same AS standards.

**Curriculum area/s: The Arts**

Vocational Pathway





## FULL YEAR

### Drama L1DRA

TOTAL  
**AS**  
CREDITS  
**20**

A great introduction to the performing arts. Students will start off exploring plays from some iconic playwrights. Following this, we will move closer to home and study some plays written by people from Aotearoa. Students need to be open to performing in front of others when taking this course. Trips will be taken to watch live theatre during the year.

**Curriculum area/s: The Arts**

Vocational Pathway



## FULL YEAR

### Making Music L1MMU

TOTAL  
**AS**  
CREDITS  
**20**

This course is for students who have some experience playing an instrument or have singing ability. Students will complete performances in solo and group performance. Students will be given the opportunity to create original music and explore musical concepts from a range of styles and context. In order to be successful in this course, students will need to be prepared to have regular lessons with our itinerant music tutors.

**Curriculum area/s: The Arts**

Vocational Pathway



## FULL YEAR

### Te Paepae o Aotea Band L1BND

TOTAL  
**AS+US**  
CREDITS  
**8-12**

This course is for students who are current band members or students who have an interest in being a member of the stage band. You will need to be willing to learn to read music and participating as part of the group. Credits for group and solo performance are available as well some music tech standards. Student will need to be willing to take lessons in their chosen instrument either at school or with an outside tutor. Please see Mr Campbell for more information.

**Curriculum area/s: The Arts**

Vocational Pathway



## SEMESTER ONE

### Noho Marae L1NMA

TOTAL  
**AS+US**  
CREDITS  
**12**

If you love tikanga and want to understand Mahi toi especially whakairo in context then this is the course for you. Stay on the Marae and Visually record your learning, explore tikanga and marae protocols. This course would suit those who have beginning Te Reo knowledge through to expert, as aspects of this course can be tailored to your strengths. (This course cannot be done in conjunction with Visual Vibes Aotearoa).

NOTE: Can not be done in conjunction with other Art subjects as they use the same Achievement standards.

**Curriculum area/s: The Arts & Te Reo**  
Vocational Pathway



## FULL YEAR

### EXPERIMENTAL Photography L1PHO

TOTAL  
**AS**  
CREDITS  
**20**

Join this exciting photography course to explore your whakapapa and express your unique identity. You'll get hands-on with different photography techniques like photograms, cyanotypes, and digital photography. This course includes Two internal assessments and two externals. Students will be expected to take photos at school and in their own time. If you are interested in creativity and taking photography at Level 2 and 3 then this is the course for you.

NOTE: Can not be done in conjunction with other Art subjects as they use the same Achievement standards.

**Curriculum area/s: The Arts**  
Vocational Pathway



## FULL YEAR

### Dawn Raids L1DAW

TOTAL  
**AS**  
CREDITS  
**15-20**

This course explores the Dawn Raids. Students will investigate the historical context, political motivations, and the social and cultural impact of the raids through a dramatic arts lens. By the end of the course, students will gain a deeper understanding of how this event shaped New Zealand's identity and relations with Pacific nations. There is a performance aspect to this course and students need to be open to performing in front of an audience.

**Curriculum area/s: The Arts, English & Social Sciences**  
**LIT: 5**

Vocational Pathway



## FULL YEAR

### Te Ao Haka L1TAH

TOTAL  
**AS**  
CREDITS  
**20**

This course is designed for students eager to explore the fundamentals of Te Ao haka. Participants will delve into the essential features of kapa haka and the rich whakapapa behind these traditions. Through understanding and applying these features, students will refine their performance skills, culminating in a final showcase to demonstrate their progress.

**Curriculum area/s: The Arts**

Vocational Pathway



## FULL YEAR

### Hospitality 101 L1HOS

TOTAL  
**US**  
CREDITS  
**26**

Welcome to Hospitality 101!

Are you ready to dive into the world of commercial cookery? In this course, you'll learn the basics and then put your skills to the test by creating your own burger in a beef burger challenge. It's perfect for students who love hands-on learning.

Hospitality 101 Part 2

Keep the momentum going in the second semester or start your journey here. You'll learn about customer service, mix up some mocktails, make delicious finger foods, and even plan an event for a group of your choice. Sound exciting? Let's get cooking!

**Curriculum area/s: Cookery**  
Vocational Pathway



## SEMESTER ONE &/OR TWO

### Practical Life Skills L1PLS

TOTAL  
US  
CREDITS  
20

This awesome course is all about real-life skills and hands-on learning. Forget just sitting in a classroom – we're diving into the stuff that really matters!

- Build a standout C.V.: Make your resume shine and get noticed.
  - Team up and communicate: Work with friends to smash common goals.
  - Stay safe at work: Learn the ins and outs of workplace health and safety.
  - Think critically: Spot fake news and understand the real impact of breaking the law.
  - Stay informed: Learn about the effects of drugs and alcohol.
  - Manage anger: Find positive ways to handle tough emotions.
  - Get money smart: Decode financial documents like a pro.
- Join us for an exciting journey where you'll gain the skills you need for life!

**Curriculum area/s: Financial Literacy,  
Communication & Self Management  
Vocational Pathway**



# 2025 Level 2 Courses

LEARNING AREA	Course Name	Course Code	Course Length
ENGLISH	Alternative English	L2ENA	Full Year
	English	L2ENG	Full Year
	Literacy (UE)	L3UEL	Semester One
LANGUAGES/ESOL	Te Reo Māori	L2MAO	Full Year
MATHEMATICS	Applied Maths	L2AMA	Full Year
	Pure Maths	L2PMA	Full Year
	Composite Maths	L2MAT	Semester One
PHYSICAL EDUCATION & HEALTH	Advance PE	L2APE	Full Year
	The Great Outdoors	L2TGO	Semester Two
	Health	L2HEA	Full Year
	Sports Leadership	L2SPL	Full Year
PRIMARY INDUSTRIES	Primary Industries Agriculture	L2AGR	Full Year
	Primary Industries Horticulture	L2HOR	Full Year
SCIENCE	Biology	L2BIO	Full Year
	Chemistry	L2CHE	Full Year
	Marine Studies	L2MNS	Full Year
	Physics	L2PHY	Full Year
	Electronics	L2ELE	Semester One
SOCIAL SCIENCES	Classical Studies	L2CLS	Full Year
	Psychology	L2PSY	Full Year
	Geography	L2GEO	Full Year
	History	L2HIS	Full Year
	Accounting	L2ACC	Full Year
	Economics	L2ECO	Full Year
	Yes Programme	L2YES	Full Year
	Social Studies	L2SOS	Full Year
TECHNOLOGY	Textiles	L2TEXT	Full Year
	Engineering Trades	L2ENT	Full Year
	Construction Technology	L2CTN	Full Year
	Digital Foundation	L2DFS	Semester Two
	Computer Science	L2CSC	Full Year
THE ARTS	Snapshot Savvy: Exploring Photography	L2PHO	Full Year
	Artistic Horizons Printmaking & Painting	L2VAA	Full Year
	Drama	L2DRA	Full Year
	Write, Direct, Perform	L2WDP	Semester One
	Music Making Music	L2MMU	Full Year
	Visual Arts External – Unleash Creativity	L2VAT	Semester Two
	Te Paepae o Aotea Band	L2BND	Full Year
	Te Ao Haka	L2TAH	Full Year
CAREERS & PATHWAYS	Gateways	L2GTW	Full Year
	Tourism	L2TOU	Full Year
	Practical Life Skills	L2PLS	Full Year
	Hospitality	L2HOS	Full Year
	Community Nutrition	L2CNU	Full Year

Where two semester courses are taken in the same curriculum area, they can be linked together for subject endorsement.



## FULL YEAR

### Alternative English L2ENA

TOTAL  
**US+AS**  
CREDITS  
**18**

Students who select this course want to continue with English but are interested in a more visual and practical approach. In this course we will use film as a platform for analysing language techniques and unpacking ideas. Students will have the opportunity to improve their communication skills and use their chosen career path as a platform for learning and achievement.

**Curriculum area/s: English**  
**UE LIT: Writing 4**

Vocational Pathway



## FULL YEAR

### English L2ENG

TOTAL  
**AS**  
CREDITS  
**24**

This course is designed for Level 2 students who have a passion for literature and want to learn how to express their ideas effectively. This is the ideal course for those who would like to pursue higher education whether it's Level 3 English or beyond.

**Curriculum area/s: English**  
**UE LIT: Writing 10; Reading 4;**  
**Reading + Writing 4**

Vocational Pathway



## FULL YEAR

### University Entrance Literacy L3UEL

TOTAL  
**US**  
CREDITS  
**12**

This course is for students who want to gain University Entrance Literacy but would prefer to gain this internally. Students will be assessed for 6 U.E Writing credits and 6 U.E Reading Credits using the 'English for Academic Purposes' Unit Standards.

**Curriculum area/s: English**  
**UE Endorsement: NO**  
**UE LIT: Reading 6; Writing 6**

Vocational Pathway



## FULL YEAR

### Te Reo Māori L2MAO

TOTAL  
**AS**  
CREDITS  
**20**

Whether you're a student seeking NCEA success or an individual interested in embracing Māori culture and language, this Te Reo Māori course offers a transformative educational experience that will cover a range of learning contexts from whaikorero, moteatea, karakia, kapa haka and more. Join us in this enriching journey to become a proficient speaker of Te Reo Māori me ona tikanga through.

**Curriculum area/s:**  
**Te Reo Māori - Languages**  
**UE LIT: 12 Writing; 6 Reading**

Vocational Pathway



## FULL YEAR

### Applied Maths L2AMA

TOTAL  
**AS**  
CREDITS  
**19**

The Level 2 Applied Maths course will cover both Algebra and Statistics topics. This course provides students with a general level of maths and has an emphasis on the practical applications. Throughout the year there will be an opportunity to complete 5 internal achievement standards and 1 external and an extension external standard. Students intending to progress to NCEA Level 3 Maths or Statistics courses must take this course.

**Curriculum area/s: Mathematics & Statistics**

Vocational Pathway



## FULL YEAR

### Pure Maths L2PMA

TOTAL  
**AS**  
CREDITS  
**22**

The Level 2 Pure Maths course is a demanding course for selected, capable students. Its goal is to cover material from the Year 12 Mathematics course at a higher level to prepare for high achievement in the level 3 Calculus or Statistics course. The content of this course places an emphasis on algebra, probability, calculus, graphical methods, systems of equations and trigonometry. Throughout both semesters there will be an opportunity of sitting 3 internals and 3 external standards, with total of 22 credits available.

**Curriculum area/s: Mathematics & Statistics**

Vocational Pathway



## SEMESTER ONE

### Composite Maths L2MAT

TOTAL  
**AS**  
CREDITS  
**10**

The Level 2 Maths course will cover both Algebra and Statistics topics. This Maths course comprises of only internals. The content covered in this course will be Sequence and Series, Networks, Simulation, and Inference. There are 4 internal achievement standards, with total of 10 credits available. This course will be offered in semester 1 and Semester 2. This course is targeted for students who are keen to complete few standards of level 2 Maths.

**Curriculum area/s: Mathematics & Statistics**

Vocational Pathway



## FULL YEAR

### Advance PE L2APE

TOTAL  
**AS**  
CREDITS  
**17**

This course is designed to provide students with a comprehensive understanding of both the theoretical and practical aspects of physical education. The course covers biophysical principles, anatomy, physiology, and sociology, integrating these concepts through engaging theory lessons and hands-on practical sessions.

**Curriculum area/s: Physical Education**

Vocational Pathway



## SEMESTER TWO

### The Great Outdoors L2TGO

TOTAL  
**AS 3**  
**US 11**  
CREDITS

Achievement standards / Unit standards – This course is designed to provide students with comprehensive knowledge and practical skills in outdoor activities, safety management, and environmental stewardship. Through a combination of classroom learning and hands-on experiences at TOPEC, students will develop leadership, teamwork, and problem-solving abilities essential for outdoor pursuits.

**Curriculum area/s: Physical Education**

Vocational Pathway



## FULL YEAR

### Health L2HEA

TOTAL  
**AS**  
CREDITS  
**20**

This Health course is designed to provide students with a comprehensive understanding of various health issues, focusing on adolescent health, resilience, Hauora (holistic well-being), and the factors influencing people's ability to manage change. The course also addresses enhancing well-being within the school community and analysing issues related to sexuality and gender.

**Curriculum area/s: Health**

Vocational Pathway



## FULL YEAR

### Sports Leadership L2SPL

TOTAL  
**AS**  
CREDITS  
**14**

This course is designed to provide students with a comprehensive understanding of leadership strategies, effective group functioning, and social responsibility in physical activity settings. The course integrates Hellison's model of social responsibility and emphasizes the analysis of group processes to foster a supportive and inclusive environment.

**Curriculum area/s: Physical Education**

Vocational Pathway



## FULL YEAR

### Primary Industries Agriculture L2AGR

TOTAL  
**US**  
CREDITS  
**25**

This is the second year of the two-year L2 Primary Industry L2 NZ Certificate in Primary Industry programme with a specific focus on Agriculture. Practical Agriculture tasks such as stock handling, and use of tools and equipment run alongside theory tasks. Unit Standards are credited towards NCEA Level 2 as well as the National Certificate in Primary Industry skills.

**Curriculum area/s: Agriculture & Science**

Vocational Pathway



## FULL YEAR

### Primary Industries Horticulture L2HOR

TOTAL  
**US**  
CREDITS  
**26**

This is the second year of the two-year L2 Primary Industry L2 NZ Certificate in Primary Industry programme with a specific focus on Horticulture. Practical Horticultural tasks such as plant propagation by seeds and cuttings and use of tools and equipment run alongside theory tasks. Unit Standards are credited towards NCEA Level 2 as well as the National Certificate in Primary Industry skills.

**Curriculum area/s: Agriculture & Science**

Vocational Pathway



## FULL YEAR

### Biology L2BIO

TOTAL  
**AS**  
CREDITS  
**19**

This NCEA Level 2 Biology course comprehensively explores key biological concepts and processes, preparing students for further study in the biological sciences. The course is structured around five achievement standards, including two internals and three externals, balancing theoretical knowledge and practical application. This course provides a solid foundation for NCEA Level 3 Biology.

**Curriculum area/s: Science**  
**UE LIT: Writing 8**

Vocational Pathway



## FULL YEAR

### Chemistry L2CHE

TOTAL  
**AS**  
CREDITS  
**17**

This NCEA Level 2 Chemistry course gives students an in-depth understanding of chemical principles and their applications. The course is designed around five achievement standards, encompassing internal and external assessments. Students will develop analytical skills, enhance their problem-solving abilities, and gain practical experience in conducting chemical investigations. This course provides a solid foundation for NCEA Level 3 Chemistry.

**Curriculum area/s: Science**

Vocational Pathway



## FULL YEAR

### Marine Studies L2MNS

TOTAL  
**AS**  
CREDITS  
**19**

The Level 2 Marine Studies course offers students an integrated exploration of marine environments through scientific investigation, ecological study, and effective teamwork. Students will engage with key Earth and Space Science concepts while developing their communication skills in collaborative settings, making this course ideal for those interested in marine biology, environmental science, and teamwork.

**Curriculum area/s: Science, Biology, Earth & Space Science**

Vocational Pathway





## FULL YEAR

### Physics L2PHY

TOTAL  
**AS**  
CREDITS  
**17**

This NCEA Level 2 Physics course is designed to deepen students' understanding of fundamental physics principles and their applications in the real world. The course combines theoretical learning with practical investigations, ensuring a comprehensive understanding of the subject matter. This course provides a solid foundation for NCEA Level 3 Physics.

**Curriculum area/s: Science & Physics**

Vocational Pathway



## SEMESTER ONE

### Electronics L2ELE

TOTAL  
**US**  
CREDITS  
**10**

This Level 2 Electronics course covers fundamental circuit concepts and measurements, as well as an introduction to basic electronic components. Students will gain practical skills in interpreting circuit diagrams, performing measurements, and understanding essential components, providing a solid foundation for more advanced electronics studies.

**Curriculum area/s: Science, Engineering & Technology**

Vocational Pathway



## FULL YEAR

### Classical Studies L2CLS

TOTAL  
**AS**  
CREDITS  
**20**

This course is based on the lives of the Ancient Greeks. You will study about the social lives of the people from slaves to leaders. You will also learn about Greek art, architecture, and literature by reading The Odyssey.

**Curriculum area/s: Social Studies**  
**UE LIT: Writing 8; Reading 18**

Vocational Pathway



## FULL YEAR

### Psychology L2PSY

TOTAL  
**AS**  
CREDITS  
**21**

Why do people act the way they do? This course examines issues related to behaviour, psychological approaches, research, and theories.

**Curriculum area/s: Social Sciences**  
**UE LIT: Reading 21**

Vocational Pathway



## FULL YEAR

### Geography L2GEO

TOTAL  
**AS**  
CREDITS  
**20**

Have you ever wondered how the shape of the land has changed over thousands of years? Have you thought about how much humans have changed the land over time? Have you seen the wonderful patterns that humans have created on this earth?

What about the potential threats to our lives?

This course provides opportunities for students to: better understand how the processes that shape natural and cultural environments change over time, vary in scale and from place to place, and create spatial patterns.

Students will better understand how people's perceptions of and interactions with natural and cultural environments differ and have changed over time.

This course is assessed by way of Achievement Standards.

**Curriculum area/s: Social Studies**

**UE LIT: Reading 8**

Vocational Pathway



## FULL YEAR

### History L2HIS

TOTAL  
**AS**  
CREDITS  
**19**

Racism, division, and inequity – Get ready to explore some of humanities most complex issues! Level 2 History presents a compelling exploration of race and racism, with a unique focus on diverse contexts from New Zealand, the Pacific, and the wider world. Get ready to embark on a profound and eye-opening journey as we confront the pivotal issues that have shaped societies over the last 300 years.

**Curriculum area/s: Social Studies**

**UE LIT: Reading 14; Writing 5**

Vocational Pathway



## FULL YEAR

### Accounting L2ACC

TOTAL  
**AS**  
CREDITS  
**19**

Do you want a career in the business world? Do you want to own your own business that is profitable?

Then you need to understand accounting.

Level 2 Accounting is focussed on processing financial information for small business including financial reporting, accounting concepts, accounting for accounts receivable, inventory and using the MYOB computer accounting package.

This course is open to any student who has preferably gained NCEA Level 1.

**Curriculum area/s: Social Studies**

Vocational Pathway



## FULL YEAR

### Economics L2ECO

TOTAL  
**AS**  
CREDITS  
**18-22**

What is the cost-of-living crisis? What are politicians doing about issues in our economy such as inflation and inequality. Why are interest rates so important to our economy? How does the Reserve Bank of New Zealand operate?

Level 2 Economics examines issues facing New Zealand such as inflation, international trade, unemployment, and government policies that affect the New Zealand economy using economic models and concepts. Causes and effects of these issues are explored from different perspectives.

**Curriculum area/s: Social Studies**

**UE LIT: Reading 10**

Vocational Pathway



## FULL YEAR

### YES Programme L2YES

TOTAL  
**AS**  
CREDITS  
**15**

If you want the experience of setting up and running your own small business, then this is the course for you.

This Level 2 course is a mix of business, and the processes related to entrepreneurship. This will involve out of class commitment and students must be able to work in groups for the full year

**Curriculum area/s: Social Studies**

Vocational Pathway



## FULL YEAR

### Social Studies L2SOS

TOTAL  
**AS**  
CREDITS  
**20**

Uncover the threads that weave our society together. Delve into dynamic global connections, social justice, how our societies and laws protect and limit us, and engage with the critical issues that shape our world's past, present, and future. Through exploration, analysis, and inquiry, you'll gain insights that will empower you as informed, responsible, and compassionate citizens of New Zealand and the world.

**Curriculum area/s: Social Studies**  
**UE LIT: Reading 9**

Vocational Pathway



## FULL YEAR

### Textiles L2TXT

TOTAL  
**AS**  
CREDITS  
**14**

Students will have the opportunity to make at least two projects over the year, which include research and written work. Students will also be offered the chance to complete one external which will be based on the work they do in class.

**Curriculum area/s: Technology & Textiles**

Vocational Pathway



## FULL YEAR

### Engineering Trades L2ENT

TOTAL  
**US**  
CREDITS  
**25**

Engineering Trades Level 2 is an introductory qualification for students interested in Mechanical Engineering. This qualification has a compulsory and an elective component. The compulsory section incorporates basic skills and knowledge in workshop safety procedures, basic engineering workshop techniques, use of basic tools and machinery and investigation, design and building of a simple product. The credits available in this course rely on students completing satisfactory projects, written work, and safe workshop practice throughout the year. Students will receive milestone information throughout the year to indicate their progress.

**Curriculum area/s: Technology & Hard Materials**

Vocational Pathway



## FULL YEAR

### Construction Technology L2CTN

TOTAL  
**US**  
CREDITS  
**33**

L2CTN is a full year Course offering 27 Unit Standard credits at Level 2 from the BCATS (Building, Construction and Allied Trade Skills) program. Students will use timber as their primary construction material to construct a piece of garden furniture. Students will work through standards based on Workshop safety; Use and care of hand tools; Use and care of portable power tools; and working from plans and specifications.

**Curriculum area/s: Hard Materials**

Vocational Pathway



## SEMESTER TWO

### Digital Foundation L2DFS

TOTAL  
**US**  
CREDITS  
**20**

Course Focus:  
Building on skills from Semester One, this course involves creating a short podcast as a capstone project. Advanced use of Excel for data analysis and visualization, and Word for comprehensive document creation. Application of coding skills to automate tasks and enhance digital projects.

**Curriculum area/s: Technology - Digital**

Vocational Pathway



## FULL YEAR

### Computer Science L2CSC

TOTAL  
**AS**  
CREDITS  
**19**

Digital Technologies Level 2 builds on foundational skills, focusing on advanced programming, design, and project development. Enhance your ability to solve complex problems and create innovative digital projects with confidence.

**Curriculum area/s: The Technology - Digital**

Vocational Pathway



## FULL YEAR

### Snapshot Savvy: Exploring Photography L2PHO

TOTAL  
**AS**  
CREDITS  
**24**

Students will dive into the world of photography, learning various methods, photographic styles and exploring their own unique subjects through three internal achievement standards. They will then embark on creating an External folio, driven by their own passions and interests.

**Curriculum area/s: The Arts**

Vocational Pathway



## FULL YEAR

### Artistics Horizons Printmaking & Painting L2VAA

TOTAL  
**AS**  
CREDITS  
**20**

Dive into your Turangawaewae by creating a series of unique prints using a variety of printmaking techniques. For the painting component, find artists who inspire you and let their work influence your own creative ideas. Both internal standards offer you the chance to carve your own artistic path. From there, you will embark on an exciting journey into either a Printmaking or Painting External folio, based on your strengths and interests. Your work from the internal projects will be the launchpad for your amazing folios.

**Curriculum area/s: The Arts**

Vocational Pathway



## FULL YEAR

### Drama L2DRA

TOTAL  
**AS**  
CREDITS  
**22**

This full year course will start by exploring different theatrical movements from around the world. We will then move closer to home to study the plays of Aotearoa's finest playwrights. Students need to be open to performing in front of others and working with a range of people in this course. Trips will be taken to watch live theatre throughout the year.

**Curriculum area/s: The Arts**  
**UE LIT: Reading 17; Writing 4**

**4 Optional Extra Credits**

Vocational Pathway



## SEMESTER ONE

### Write, Direct, Perform Arts L2WDP

TOTAL  
**AS**  
CREDITS  
**10+**

This course offers an immersive experience in playwriting and directing. We will be guiding students through the entire process of creating an original play and bringing it to life on stage. Students will learn the fundamentals of playwriting, including character development, dialogue, and structure. They will also explore the art of directing, focusing on casting, stage blocking, and working with actors. By the end of the course, students will have written, directed, and performed original short scenes.

**Curriculum area/s: The Arts & English**  
**UE LIT: Reading 4; Writing 4**

Vocational Pathway



## FULL YEAR

### Making Music L2MMU

TOTAL  
**AS**  
CREDITS  
**26**

This course is for students you have successfully completed Level 1 music or equivalent experience. Students will plan their pathway from a range of standards which could include solo and group performance. Creating original music, there is an opportunity to perform on a second instrument. Students can also complete a NZ music research project. In order to be successful in this course students should be having instrument/vocal lessons currently or be prepared to have regular lessons with our itinerant music tutors. Optional external Level 2 score reading exam.

**Curriculum area/s: The Arts**  
Vocational Pathway



## SEMESTER TWO

### Visual Arts External - Unleash Creativity L2VAT

TOTAL  
**AS**  
CREDITS  
**12**

Are you a akonga with a passion for creativity? This course is designed just for you! Here, you'll have the chance to: Explore your Artistic identity and dive deep into what makes your art unique, Document your journey through a workbook, detailing your ideas and progress and create a portfolio of artworks that reflects your interests and chosen themes. To succeed, you'll need a strong work ethic and the ability to work independently. While having prior art experience in 2024 is helpful, the most important thing is your passion for creating. This is your opportunity to create your own artworks in a supportive environment.

**Curriculum area/s: The Arts**

Vocational Pathway



## FULL YEAR

### Te Paepae o Aotea Band L2BND

TOTAL  
**AS+US**  
CREDITS  
**8-12**

This course is for students who are current band members or students who have an interest in being a member of the stage band. You will need to be willing to learn to read music and participating as part of the group. Credits for group and solo performance are available as well some music tech standards. Student will need to be willing to take lessons in their chosen instrument either at school or with an outside tutor. Please see Mr Campbell for more information.

**Curriculum area/s: The Arts**

Vocational Pathway



## FULL YEAR

### Te Ao Haka L2TAH

TOTAL  
**AS**  
CREDITS  
**20**

In this course, students will immerse themselves in the creation and performance of Te Ao haka disciplines. They will also develop skills to analyze and compare specific performances, gaining a deeper insight into the elements that shape a kapa haka bracket. Students will have the opportunity to showcase their newfound knowledge and skills in performance settings, whether on a competition stage or within a classroom environment.

**Curriculum area/s: The Arts**

Vocational Pathway



## FULL YEAR

### Gateways L2GTW

TOTAL  
**US**  
CREDITS  
**20**

Hey there! If you're in Year 12 and thinking about your future career, the Gateway program might be just what you need. It's perfect for students who are ready to dive into the working world and want to get a head start. What's Gateway all about? Real-world experience: Get a taste of what it's like to work in your chosen industry while you're still in school. Build connections: Gateway helps you link up with businesses, giving you a chance to make valuable contacts. Skill development: You'll develop important vocational skills that are super relevant for today's job market. Qualifications: Start working towards the qualifications you'll need for your future career. Curious to learn more? Check out the Gateway page for all the details!

**Curriculum area/s: Vocational**  
Vocational Pathway



## FULL YEAR

### Tourism L2TOU

TOTAL  
**US**  
CREDITS  
**24**

Welcome to Tourism 101!

Are you ready to dive into the exciting world of tourism? In this course, you'll gain valuable skills and knowledge about the industry. Here's what you'll get to do:

- Explore World Destinations: Discover amazing places around the globe and see what makes them special.
- Learn About New Zealand: Find out why over 3 million tourists visit our beautiful country each year. Explore all the incredible attractions and experiences New Zealand has to offer.

Sound like fun? Let's start this adventure together!

**Curriculum area/s: Tourism**

Vocational Pathway



## FULL YEAR

### Practical Life Skills 2 L2PLS

TOTAL  
**US**  
CREDITS  
**26**

Hey there! Ready to jump into some real-world learning? This course is perfect for 16-year-olds who want to gain practical skills through fun and engaging activities.

- Nail your first impression: Master personal presentation to stand out.
- Explore careers: Find the path that's right for you.
- Work placement: Get firsthand experience in the workplace.
- Know your rights: Understand employment contracts inside and out.
- Living in a rental: Learn how to manage a household and deal with landlords.
- Community safety: Discover how the police help keep our communities safe.
- Professional documents: Create polished documents using Word.
- Teamwork: Communicate effectively in groups to achieve common goals. Get ready for a course that mixes practical experience with vital life skills, setting you up for future success!

**Curriculum area/s: Primary Industries**

Vocational Pathway



## FULL YEAR

### Hospitality L2HOS

TOTAL  
**US**  
CREDITS  
**27**

Do you know the difference between a cappuccino and a macchiato? If you're keen to master the art of coffee making, this course is for you! Learn the ins and outs of a coffee machine and gain skills that could help you land a part-time job. You'll also learn how to make mini cakes, sandwiches, and brew a perfect cuppa tea so you can host a high tea event for your whānau to enjoy.

Second Semester Highlights:

Level Up in Food Safety: Enhance your cooking skills with essential food safety knowledge.

Cultural Food Exploration: Research and learn about foods from different cultures, their stories, and then share and sample these dishes with your class.

International Food Expo: Perfect your dish and plan an international food expo for everyone to enjoy.

Ready to brew, bake, and explore? Let's get started!

**Curriculum area/s: Hospitality**

Vocational Pathway



## FULL YEAR

### Community Nutrition L2CNU

TOTAL  
**AS**  
CREDITS  
**20**

Hey there, future nutrition ninjas! Welcome to the kick-off of our Community Nutrition adventure. This isn't just about what's on your plate; it's about diving into the why behind the fries, the salads, and everything in-between.

We're going to explore the maze of food choices in our neighbourhoods and unravel the mysteries of why we eat what we eat.

And because we learn best by doing, we'll be experimenting with new ingredients, whipping up some culinary magic, and presenting it like pros.

**Curriculum area/s: Home Economics**

Vocational Pathway



# 2025 Level 3 Courses

LEARNING AREA	Course Name	Course Code	Course Length
ENGLISH	English	L3ENG	Full Year
	University Entrance Literacy	L3UEL	Semester One
LANGUAGES/ESOL	Te Reo Māori	L3MAO	Full Year
MATHEMATICS	Calculus	L3CAL	Full Year
	Statistics	L3STA	Full Year
	Maths	L3MAT	Semester One or Two
PHYSICAL EDUCATION & HEALTH	Advanced PE	L3APE	Full Year
	Health	L3HEA	Full Year
	The Great Outdoors	L3TGO	Semester One
	Fitness Studies	L3FTS	Semester Two
	Sport Leadership	L3SPL	Semester One
PRIMARY INDUSTRIES	Primary Industries - Agriculture	L3AGR	Full Year
	Primary Industries - Horticulture	L3HOR	Full Year
SCIENCE	Biology	L3BIO	Full Year
	Chemistry	L3CHE	Full Year
	Applied Science	L3ASC	Full Year
	Physics	L3PHY	Full Year
	Marine Science	L3MNS	Full year
SOCIAL SCIENCES	Classical Studies	L3CLS	Full Year
	History	L3HIS	Full Year
	Geography	L3GEO	Full Year
	Accounting	L3ACC	Full Year
	Economics	L3ECO	Full Year
	Psychology	L3PSY	Full Year
TECHNOLOGY	Yes Programme	L3YES	Full Year
	Textiles	L3TXT	Full Year
	Construction Technology	L3CTN	Full Year
	Computer Science	L3CSC	Full Year
THE ARTS	Lens Legends Mastering Photography	L3PHO	Full Year
	Visual Arts External – Unleash Creativity	L3VAT	Semester Two
	Painting Odyssey	L3VAA	Full Year
	Drama	L3DRA	Full Year
	Making Music	L3MMU	Full Year
	Write, Direct, Perform	L3WDP	Semester One
	Te Paepae o Aotea Band	L3BND	Full Year
Te Ao Haka	L3TAH	Full Year	
CAREERS & PATHWAYS	Hospitality	L3HOS	Full Year
	Tourism	L3TOU	Full Year
	Nutritional Health & Societal Well-being	L3HSW	Full Year
	Practical Life Skills	L3PLS	Full Year
	Gateway	L3GTW	Full Year

Where two semester courses are taken in the same curriculum area, they can be linked together for subject endorsement.





## FULL YEAR

### English L3ENG

TOTAL  
**AS**  
CREDITS  
**24**

English at this level brings together the attributes developed in previous years. The course integrates literature with the skills of critical thinking and analysis. Students will engage in all of the essential strands of the English Curriculum. The tasks enable our ākonga to personalise their learning, enabling them to translate knowledge across curriculum areas. Students will finish this course with a better ability to understand and shape language so that they can think critically as adults.

**Curriculum area/s:** English

**UE Endorsement:** YES

**UE LIT: Reading + Writing 8;  
Writing 6; Reading 4**

Vocational Pathway



## FULL YEAR

### University Entrance Literacy L3UEL

TOTAL  
**US**  
CREDITS  
**12**

This course is for students who want to gain University Entrance Literacy but would prefer to gain this internally. Students will be assessed for 6 U.E Writing credits and 6 U.E Reading Credits using the 'English for Academic Purposes' Unit Standards.

**Curriculum area/s:** English

**UE Endorsement:** NO

**UE LIT: Reading 6; Writing 6**

Vocational Pathway



## FULL YEAR

### Te Reo Māori L3MAO

TOTAL  
**AS**  
CREDITS  
**24**

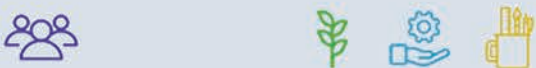
Advanced language structures, engage with authentic texts, and delve into the cultural intricacies of Te Ao Māori. Refine your speaking, listening, reading, and writing skills while gaining a profound understanding of language within its historical context. Prepare for NCEA Level 3 assessments as you immerse yourself in Te reo me ona tikanga me nga kaupapa katoa o te Ao Maori.

**Curriculum area/s:** Te Reo Māori

**UE Endorsement:** YES UE

**UE LIT: Reading 6; Writing 12**

Vocational Pathway



## FULL YEAR

### Calculus L3CAL

TOTAL  
**AS**  
CREDITS  
**22**

The Level 3 Mathematics with Calculus course is a demanding course for selected, capable students with good algebraic skills and it is suitable for students pursuing medical or engineering courses in the future. Calculus is about using mathematics to solve problems. It models real-life situations using trigonometry, linear programming, equations, functions, and their graphs. Level 3 Calculus will be assessed through 3 internal achievement standards and 2 external achievement standards plus an extension external standard, with total of 22 - 27 credits available. The prerequisites for this are Level 2 Pure Maths.

**Curriculum area/s:** Mathematics & Statistics

**UE Endorsement:** YES

Vocational Pathway



## FULL YEAR

### Statistics L3STA

TOTAL  
**AS**  
CREDITS  
**20**

The Level 3 Statistics course is designed for students to explore mathematical and statistical skills and must then apply these skills and interpret solutions. Statistics is the study of mathematics, statistics, probability, and its applications. This course is suitable for students who would like to complete further studies from universities or other tertiary institutions. There are 4 internal achievement standards and 2 external achievement standards, with total of 20 credits available. The prerequisites for this are Level 2 Pure Maths or Level 2 Applied Maths.

**Curriculum area/s: Mathematics & Statistics**

**UE Endorsement: YES**

Vocational Pathway



## SEMESTER ONE OR TWO

### Maths L3MAT

TOTAL  
**AS**  
CREDITS  
**14**

The Level 3 Maths course comprises of only internals. The content covered in this course will be simultaneous equations, linear programming, and bi-variate data. There are 3 internal achievement standards and an extension internal, with total of 10-14 credits available. This course will be offered in semester 1.

**Curriculum area/s: Mathematics & Statistics**

**UE Endorsement: YES**

Vocational Pathway



## FULL YEAR

### Advanced PE L3APE

TOTAL  
**AS**  
CREDITS  
**19**

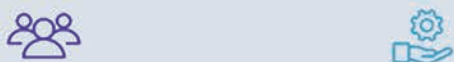
This course is designed to provide students with a comprehensive understanding of physical activity and its impact on lifelong well-being. Through a combination of theoretical and practical components, students will develop the skills and knowledge necessary to evaluate, analysis, and improve their physical performance, as well as understand the broader societal implications of physical activity.

**Curriculum area/s: Physical Education**

**UE Endorsement: YES**

**LIT: Reading 4**

Vocational Pathway



## FULL YEAR

### Health L3HEA

TOTAL  
**AS**  
CREDITS  
**19**

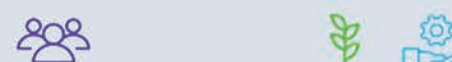
This course is designed to provide students with an in-depth understanding of health issues both within New Zealand and internationally. The course will explore contemporary ethical issues related to well-being and evaluate various models for health promotion. Through critical analysis and practical application, students will gain the skills necessary to make informed decisions about health and well-being.

**Curriculum area/s: Physical Education**

**UE Endorsement: YES**

**UE LIT: Reading 19**

Vocational Pathway



## SEMESTER ONE

### The Great Outdoors L3TGO

TOTAL CREDITS  
**AS 3**  
**US 18**

Achievement standards / Unit standards - In this course you will discover more about yourself, how you react in challenging situations and learn the skills to be a valuable part of a team. You will learn to reflect, be resourceful and responsible for yourself. Students will get the opportunity to be involved in decision making around EOTC planning and health and safety.

**Curriculum area/s: Outdoor Education**

Vocational Pathway



## SEMESTER TWO

### Fitness Studies L3FTS

TOTAL CREDITS  
**US 14**

This Year 13 Fitness Studies course is designed for students who enjoy being physically active and want to improve their own physical fitness. The course focuses on enhancing students' understanding of the components of fitness, various methods of training, and how to work out correctly and safely.

**Curriculum area/s: Physical Education**

Vocational Pathway



## SEMESTER ONE

### Sports Leadership L3SPL

TOTAL CREDITS  
**US 20**

Become a Confident Coach: Multi-Sport Coaching Skills. Take a shot at becoming a confident coach with game-winning communication, planning, and mentoring skills. This interactive semester one course is designed for 17 and 18-year-olds to develop coaching techniques that can be applied to any sport, from Rugby, Netball, Hockey to Football. Ākonga will huddle in to learn essential skills to become confident coaches, whether on the rugby field or any other sporting arena.

**Curriculum area/s: Physical Education**

Vocational Pathway



## FULL YEAR

### Agriculture L3AGR

TOTAL CREDITS  
**US 23**

Year 13 Agriculture consists of theory based L3 Unit Standards and field visits. This course focuses upon preparing students to enter work in the agricultural domain. Livestock health and feeding are explored as well as opportunities available in the farming industry for those wishing to undertake a more practical career in agriculture, rather than seek university qualifications.

**Curriculum area/s: Agriculture & Science**

Vocational Pathway



## FULL YEAR

### Horticulture L3HOR

TOTAL  
**US**  
CREDITS  
**26**

Year 13 Horticulture consists of theory based L3 Unit Standards and field visits. This course focuses upon preparing students to enter work in the horticultural domain particularly in parks, reserves, sport turf and plant nursery industries. Plants used in parks and reserves and in riparian planting are studied as well as opportunities for employment and further study in horticulture are examined.

**Curriculum area/s:** Horticulture & Science

Vocational Pathway



## FULL YEAR

### Biology L3BIO

TOTAL  
**AS**  
CREDITS  
**19**

This NCEA Level 3 Biology course provides a comprehensive study of advanced biological concepts. The course is designed to enhance critical thinking and analytical skills, preparing students for further study and careers in the biological sciences.

**Curriculum area/s:** Science & Biology  
**UE Approved:** YES  
**UE LIT:** Reading 19; Writing 13

Vocational Pathway



## FULL YEAR

### Chemistry L3CHE

TOTAL  
**AS**  
CREDITS  
**19**

This NCEA Level 3 Chemistry course explores advanced concepts in chemistry, building upon knowledge from previous levels. It emphasizes both theoretical understanding and practical application, fostering skills essential for further study and careers in scientific fields. This course provides a solid foundation for tertiary education in chemistry, chemical engineering, environmental science, and related disciplines.

**Curriculum area/s:** Science & Chemistry  
**UE Approved:** YES  
**UE LIT:** Reading 3; Writing 3

Vocational Pathway



## FULL YEAR

### Applied Science L3ASC

TOTAL  
**AS**  
CREDITS  
**17**

This NCEA Level 3 Applied Science course offers an interdisciplinary approach to advanced scientific concepts, combining elements from biology, chemistry, and physics. The course is tailored for students who are interested in exploring a broad spectrum of scientific principles and their applications.

**Course exclusions:** L3BIO, L3CHE, L3PHY  
**Curriculum area/s:** Science, Biology, Physics & Chemistry  
**UE Approved:** YES  
**UE LIT:** Reading 9; Writing 6

Vocational Pathway



## FULL YEAR

### Physics L3PHY

TOTAL  
**AS**  
CREDITS  
**17**

This NCEA Level 3 Physics course is designed for students who wish to further their understanding of advanced physics concepts and their applications. The course covers a range of topics providing students with a strong foundation for tertiary study in physics, engineering, or related disciplines.

**Curriculum area/s:** Science & Physics  
**UE Approved:** YES

Vocational Pathway



## FULL YEAR

### Marine Science L3MNS

TOTAL  
**AS**  
CREDITS  
**12**

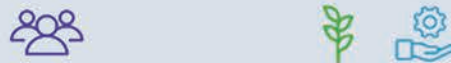
Take a deeper dive into the marine world- what lives there, how the ecosystem function, how the ocean systems work and some socio-scientific issues that comes from this world. Students will also have the opportunity complete their open dive tickets. This is not compulsory, and this is at the cost of the student but does come with an additional 13 level 3 credits.

**Curriculum area/s:** Science, Earth & Space  
**Science**

**UE Approved:** NO

**UE LIT: Reading 12; Writing 4**

Vocational Pathway



## FULL YEAR

### Classical Studies L3CLS

TOTAL  
**AS**  
CREDITS  
**20**

Rome wasn't built in a day!  
In this course you will learn about Roman religion and architecture and how it is reflected in today's world. You will also read Virgil's epic, The Aeneid.

**Curriculum area/s:** Social Science  
**UE Approved:** YES  
**UE LIT: Reading 20; Writing 8**

Vocational Pathway



## FULL YEAR

### History L3HIS

TOTAL  
**AS**  
CREDITS  
**25**

In this full year course, students will take an analytical approach to history, identifying different narratives of the past and identifying their own conclusions on events. In this course we will explore:

- The Northern War - Most people in Aotearoa New Zealand have heard the story of Ngā Puhī Chief Hone Heke chopping down the flag staff over Kororāreka (Russell) but few know this sparked the first of a series of conflicts known as the New Zealand Wars.
- The Atomic Bombs - For the first and only time in world history, two separate atomic bombs were dropped on Japanese cities by American forces in 1945 in the concluding weeks of World War II. But was it really necessary to use these weapons?
- The Stolen Generation - The Stolen Generation is the name given to indigenous Australian children who were taken from their families by the Australian federal and state government agencies and church missions across the country. These children were taken as part of policy to assimilate indigenous people into White Australian Society.

**Course exclusions:** Social Science

**UE Approved:** YES

**UE LIT: Reading 25; Writing 10**

Vocational Pathway



## FULL YEAR

### Geography L3GEO

TOTAL  
**AS**  
CREDITS  
**21**

This course provides opportunities to: Understand how interacting processes shape natural and cultural environments, occur at different rates and on different scales, and create spatial variations. Understand how people's diverse values and perceptions influence the environmental, social, and economic decisions and responses that they make.

This course is assessed by way of Achievement Standards.

**Curriculum area/s: Social Science**

**UE Approved: YES**

**UE LIT: Reading 21; Writing 8**

Vocational Pathway



## FULL YEAR

### Accounting L3ACC

TOTAL  
**AS**  
CREDITS  
**21**

Level 3 Accounting is focussed on Partnership Accounting, and company accounting, including accounting concepts and their application, job costing, management accounting such as cost-volume-profit analysis and cash budgets, alongside analysis of a publicly listed company.

**Curriculum area/s: Social Science**

**UE Approved: YES**

**UE LIT: Reading 9; Writing 9**

Vocational Pathway



## FULL YEAR

### Economics L3ECO

TOTAL  
**AS**  
CREDITS  
**18-24**

Why do consumers behave the way do? How does government fix markets that are not fair or efficient? How can we show how markets are affected by government?

Level 3 Economics is focussed on how consumers react to changes in price (microeconomic concepts), government responses to market failure, analysis of government interventions in markets and their effects on allocative efficiency as well as a comparison of different market structures and their outcomes (macroeconomics).

**Curriculum area/s: Social Science**

**UE Approved: YES**

**UE LIT: Reading 18; Writing 8**

Vocational Pathway



## FULL YEAR

### Psychology L3PSY

TOTAL  
**AS**  
CREDITS  
**22**

Why do people behave the way they do?

This course explores human responses and behaviour including the study of different approaches to psychology, analysing issues, conducting research, and understanding how theory can be put into practice.

Note: most of this course is internally assessed using Achievement Standards.

**Course excludions: Social Science**

**UE Approved: YES**

**UE LIT: Reading 22; Writing 3**

Vocational Pathway



## FULL YEAR

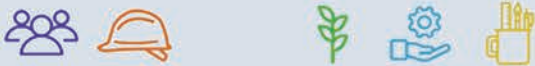
### YES Programme L3YES

TOTAL  
**AS**  
CREDITS  
**15**

If you are wanting to own your business in the future here is an opportunity to do and learn. This Level 3 course is a mix of business and the processes related to entrepreneurship at Level 3. Understanding the importance of getting the Price, Promotion, Place and Product is vital for success. This will involve out of class commitment and students must be able to work in groups for the full school year.

**Curriculum area/s: Social Science**  
**UE Approved: YES**  
**UE LIT: Reading 6**

Vocational Pathway



## FULL YEAR

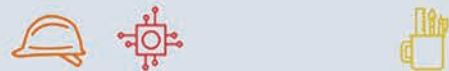
### Textiles L3TXT

TOTAL  
**AS**  
CREDITS  
**20**

Students will have the opportunity to make at least two projects over the year, which include research and written work. The Level 3 achievement standards may require the student to work with a client. The practical work may be for someone other than themselves. Scholarship level is available. Students will also be offered the chance to complete one external which will be based on the work they do in class.

**Curriculum area/s: Technology & Textiles**  
**UE Approved: YES**

Vocational Pathway



## FULL YEAR

### Construction Technology L3CTN

TOTAL  
**US**  
CREDITS  
**40**

L3CTN is a full year course offering up to 40 Level 3 credits from the BCATS (Building, Construction and Allies Trade Skills) program. Students will work as a group to complete a school/community based practical construction task to 'Industry Standard'. As students work through their project they will develop skills around project planning, use and care of tools, communication and collaboration with other trades and suppliers, safety, and materials.

**Curriculum area/s: Technology & Hard Materials**

Vocational Pathway



## FULL YEAR

### Computer Science L3CSC

TOTAL  
**AS**  
CREDITS  
**20**

Building on your skills from digital technologies Level 2, this course teaches a range of digital technologies skills with a focus on programming, design, and development of projects. Learn how to solve problems with technology and use your skills to create a project of your own!

**Curriculum area/s: Technology - Digital**  
**UE Approved: YES**

Vocational Pathway



## FULL YEAR

### Lens Legends: Mastering Photography L3PHO

TOTAL  
**AS**  
CREDITS  
**26**

Unleash your passion for photography and dive into the creative process! At this level, you'll explore your favourite photographic styles and subjects. Show off your understanding of different subjects and refine your ideas through the lens. Get hands-on with experimental photography and master essential editing tools to bring your vision to life. Students will complete three internals and one external folio.

**Course exclusions:** *The Arts*

**UE Endorsement:** YES

**UE LIT:** Reading 4

Vocational Pathway



## SEMESTER TWO

### Visual Arts External - Unleash Creativity L3VAT

TOTAL  
**AS**  
CREDITS  
**14**

Unleash your passion for creativity and dive into the creative process! At this level, you'll explore your favourite creative styles and subjects. Show off your understanding of different subjects and refine your ideas through either Painting or Photography.

Students who have either a natural artistic ability or who have completed Art courses in 2024 or 2023 would be suitable for this course. Strong work ethic and the ability to work independently is paramount to achieving the external folio board.

**Curriculum area/s:** *The Arts*

**UE Endorsement:** YES

Vocational Pathway



## FULL YEAR

### Painting Odyssey L3VAA

TOTAL  
**AS**  
CREDITS  
**22**

Students unleash their inner artists, diving headfirst into the vibrant world of painting. At this stage, they've discovered their favourite styles, genres, and subjects. They'll dazzle with their painting prowess and bring their ideas to life through dynamic practice. The canvas is their playground, and creativity knows no bounds!

**Curriculum area/s:** *The Arts*

**UE Endorsement:** YES

**UE LIT:** Reading 4; Optional Extra Standard

Vocational Pathway



## FULL YEAR

### Drama L3DRA

TOTAL  
**AS**  
CREDITS  
**22**

This full year course will start by exploring different theatrical movements from around the world. We will then move closer to home to study the plays of Aotearoa's finest playwrights. Students need to be open to performing in front of others and working with a range of people in this course. Trips will be taken to watch live theatre throughout the year.

**Curriculum area/s:** *The Arts*

**UE Endorsement:** YES

**UE LIT:** Reading 17; Writing 4

Vocational Pathway





## FULL YEAR

### Making Music L3MMU

TOTAL  
**AS**  
CREDITS  
**26**

This course is for students who have successfully completed NCEA Level 2 music or equivalent experience. Students will plan their pathway from a range of NCEA standards. Students will plan and perform two solo programmes; Complete ensemble/group performances; Create original music. There is an opportunity to perform on a second instrument. Students could also investigate a research music topic. In order to be successful in this course students should be currently having instrument/vocal lessons or having regular lessons with our itinerant music tutors.

**Curriculum area/s: The Arts**

**UE Approved: YES**

**UE LIT: Reading 6**

Vocational Pathway



## SEMESTER ONE

### Write, Direct, Perform L3WDP

TOTAL  
**AS-US**  
CREDITS  
**10**

This course offers an immersive experience in playwriting and directing. We will be guiding students through the entire process of creating an original play and bringing it to life on stage. Students will learn the fundamentals of playwriting, including character development, dialogue, and structure. They will also explore the art of directing, focusing on casting, stage blocking, and working with actors. By the end of the course, students will have written, directed, and performed original short plays.

**Curriculum area/s: The Arts**

**UE LIT: Reading 5; Writing 5**

Vocational Pathway



## FULL YEAR

### Te Paepae o Aotea Band L3BND

TOTAL  
**AS+US**  
CREDITS  
**8-12**

This course is for students who are current band members or students who have an interest in being a member of the stage band. You will need to be willing to learn to read music and participating as part of the group. Credits for group and solo performance are available as well some music tech standards. Student will need to be willing to take lessons in their chosen instrument either at school or with an outside tutor. Please see Mr Campbell for more information.

**Curriculum area/s: The Arts**

Vocational Pathway



## FULL YEAR

### Te Ao Haka L3TAH

TOTAL  
**AS**  
CREDITS  
**20**

This course invites students to engage with the advanced aspects of Te Ao haka. Participants will reflect on their journey so far through a specific discipline while also critically analyzing and comparing complex performances. This comprehensive approach will enhance their understanding of the intricate elements that compose a kapa haka bracket. Students will have the opportunity to demonstrate their expertise and creativity in various performance settings, including competitive stages and simulated classroom environments.

**Curriculum area/s: The Arts**

Vocational Pathway



## FULL YEAR

### Hospitality L3HOS

TOTAL  
**US**  
CREDITS  
**21**

Hey food warriors! It's time to level up in the kitchen with some epic food safety skills. We're not just talking about washing your hands here—we're diving into the nitty-gritty of food hazards and the ninja moves to control them.

Think of it like a video game, where the enemies are invisible bacteria and your weapons are knowledge and a spatula. You'll learn how to spot these sneaky critters and the best strategies to keep your food safe and sound.

And here's the best part: you'll use your newfound powers to whip up some seriously awesome eats. Learn about culinary terms and finish with some barista training.

So, grab your apron and let's turn that kitchen into a battleground against food hazards.

**Curriculum area/s: Cookery, Food Safety**  
Vocational Pathway



## FULL YEAR

### Tourism L3TOU

TOTAL  
**US**  
CREDITS  
**29**

Ready to embark on a journey that's more than just a vacation? It's time to deep-dive into New Zealand, the land of epic landscapes and cultural treasures. Here's what's up:

**Māori Magic:** Discover the soul of NZ through Māori place names. They're not just names; they're stories, history, and a connection to the land. Plus, you'll learn to greet and farewell like a local with te reo Māori phrases that'll earn you nods of respect.

**Global Gateway:** Will it be the vibrant streets of Asia, the historic vibes of Europe, the sun-kissed shores of Australia, or the lush islands of the Pacific first? Your call!

**Bucket List Boss:** Craft your ultimate travel wishlist. From the Great Wall to the Eiffel Tower, from the Outback to the Pacific's hidden paradises—start dreaming, start planning.

**Tourism Trailblazer:** All this knowledge isn't just cool; it's your ticket to the booming tourism industry. You're not just learning; you're prepping for a career that could take you anywhere (literally).

**Curriculum area/s: Travel, Tourism Māori Practices**  
Vocational Pathway



## FULL YEAR

### Nutritional Health & Societal Well-Being L3HSW

TOTAL  
**AS**  
CREDITS  
**20**

Welcome to the world of Community Nutrition, where we're not just eating—we're exploring the why behind every bite.

Here's the scoop:

**Food Choices:** We're diving deep into the food scene in our 'hoods. Why do we go nuts for donuts or pick kale over cake?

**Food Security:** It's all about making sure everyone has access to that good, good grub.

**Health Promotion:** We're talking about leveling up community health and keeping everyone in tip-top shape.

**Social Determinants of Health:** Ever think about how where you live affects what you eat? We're on it!

**Hauora Connection:** We're linking it to everything we do. And the real fun? We're getting hands-on with food.

**Curriculum area/s: Home Economics**  
**UE LIT: Reading 15; Writing 5**  
Vocational Pathway



## FULL YEAR

### Practical Life Skills L3PLS

TOTAL  
**US**  
CREDITS  
**21**

Hey! Ready to take control of your future with some hands-on, interactive learning? This course is designed for 18-year-olds who want to gain practical skills and knowledge to succeed.

**Handle workplace issues:** Learn how to navigate employment relationships confidently.

**Show what you know:** Demonstrate your skills from a work placement.

**Plan your career:** Map out a career pathway that aligns with your goals and aspirations.

Get ready for a course that's all about setting you up for success in the real world!

**Curriculum area/s: Vocational Pathway**  
Vocational Pathway



**FULL YEAR**

**Gateway  
L3GTW**

TOTAL  
**US**  
CREDITS  
**20**

Hey, Year 13 students!

Are you ready to jumpstart your career while still in school? The Gateway program is your ticket to getting real-world experience and making valuable connections in the industry you're passionate about.

Why Gateway?

Hands-On Experience: Get a taste of what it's like to work in your chosen field.

Build Connections: Link up with businesses and start networking early.

Skill Development: Gain vocational skills that are crucial for today's job market.

Start Your Qualifications: Begin working towards the qualifications you'll need for your future career.

Don't miss out on this awesome opportunity! Check out the Gateway page for more info

**Curriculum area/s: Vocational Pathways**

Vocational Pathway



### Some studies within the programme are, but not limited to:

- Automotive
- Agriculture
- Animal Care
- Building and Construction
- Business Administration
- Education - including Early Childhood
- Horticulture
- Hospitality
- Plumbing
- Electrical
- Engineering
- Mechanical
- Equine
- New Zealand Certificate in Health & Wellbeing (Level 2)
- New Zealand Certificate in Health & Wellbeing (Level 3)
- New Zealand Certificate in Cleaning (Level 3)
- New Zealand Certificate in Youth Work (Level 3)
- Foundation of Disability Support (Level 3)
- Cultural Confidence (Level 3)

# Gateway

## NCEA Level 2 & 3

## Course Description

Students involved in NCEA Levels 2 and 3 can pursue these qualifications whilst beginning a trade/career-specific qualification. They may be registered with the appropriate Industry Training Organisation (ITO) to begin workplace training.

Students are encouraged to go out and find their placement. All Gateway students complete Health and Safety and First Aid units before they begin their placement.

Students are in a training situation and are not to be paid while on Gateway placement.

Students chosen for the programme need to be committed to it. They will become full members of an organisation's workplace. They will be treated much the same as any other employee and follow the school rules applicable to students outside the classroom.

There is no cost to a student to be involved in this programme. Priority is given to Year 13 students, but Year 12 students will be considered where necessary.

## Assessment

It is an expectation that students will achieve a minimum of 20 credits directly related to their industry/work placement sourced from external providers. Levels vary depending on the industry.

## Entry Requirements

Acceptance into the program will involve an application and an interview. Interested students are welcome to access more information from the Transition Centre in G-Block. Senior students must displace commitment, responsibility and an attitude to succeed within the Gateway program.

**Cost - NIL**



# Senior Leadership Team



**Rachel Williams**  
Tumuaki



**Pauline Hurley**  
Leader of Learning  
Senior School - Curriculum  
[Pauline.Hurley@tepaepaeoaotea.school.nz](mailto:Pauline.Hurley@tepaepaeoaotea.school.nz)



**Mahaki Akauola**  
Leader of Learning  
Senior School - Pastoral  
[Mahaki.Akauola@tepaepaeoaotea.school.nz](mailto:Mahaki.Akauola@tepaepaeoaotea.school.nz)



**Kai Elgar**  
Careers Lead & Social Sciences  
[Kai.Elgar@tepaepaeoaotea.school.nz](mailto:Kai.Elgar@tepaepaeoaotea.school.nz)



**Riejanne Campbell**  
Transition Lead & Whare Leader Pastoral - Pātea  
[Riejanne.Campbell@tepaepaeoaotea.school.nz](mailto:Riejanne.Campbell@tepaepaeoaotea.school.nz)



**Virenda Kumar**  
Mathematics & Statistics  
[Virenda.Kumar@tepaepaeoaotea.school.nz](mailto:Virenda.Kumar@tepaepaeoaotea.school.nz)



**Emily Davidson**  
The Arts  
[Emily.Davidson@tepaepaeoaotea.school.nz](mailto:Emily.Davidson@tepaepaeoaotea.school.nz)



**Kelly Stevens**  
Health & Physical Education  
[Kelly.Stevens@tepaepaeoaotea.school.nz](mailto:Kelly.Stevens@tepaepaeoaotea.school.nz)



**Anaru Haerewa**  
Learning of Languages  
[Anaru.Haerewa@tepaepaeoaotea.school.nz](mailto:Anaru.Haerewa@tepaepaeoaotea.school.nz)



**Mr Campbell**  
Intinerant Music Lead  
[Shaun.Campbell@tepaepaeoaotea.school.nz](mailto:Shaun.Campbell@tepaepaeoaotea.school.nz)



**Mr Bain**  
ESOL Lead  
[Des.Bain@tepaepaeoaotea.school.nz](mailto:Des.Bain@tepaepaeoaotea.school.nz)



**Miss Hargreaves**  
Whare Leader Pastoral - Tangahoe  
[Christine.Hargreaves@tepaepaeoaotea.school.nz](mailto:Christine.Hargreaves@tepaepaeoaotea.school.nz)



**Mrs Moss**  
ORS Lead  
[Kathryn.Moss@tepaepaeoaotea.school.nz](mailto:Kathryn.Moss@tepaepaeoaotea.school.nz)



**Ms Walker**  
Whare Leader Pastoral - Kaūpokonui  
[Faye.Walker@tepaepaeoaotea.school.nz](mailto:Faye.Walker@tepaepaeoaotea.school.nz)



**Mr Robinson**  
Whare Leader Pastoral - Waingongoro  
[Chris.Robinson@tepaepaeoaotea.school.nz](mailto:Chris.Robinson@tepaepaeoaotea.school.nz)



**Ms Poldek**  
Science  
[Liz.Poldek@tepaepaeoaotea.school.nz](mailto:Liz.Poldek@tepaepaeoaotea.school.nz)



**Mrs Scown**  
SCT & Literacy Leader  
[Kathryn.Scown@tepaepaeoaotea.school.nz](mailto:Kathryn.Scown@tepaepaeoaotea.school.nz)



**Rose Fischer**  
English  
[Rose.Fischer@tepaepaeoaotea.school.nz](mailto:Rose.Fischer@tepaepaeoaotea.school.nz)

